



Innehåll - Livsmedelsdelar

| | | |
|---|------------------------|----|
| Böjar / Elbows | från sidan / from page | 1 |
| T-rör / Tee | från sidan / from page | 4 |
| Konor / Reducers | från sidan / from page | 7 |
| Rörhållare / Pipe supports | från sidan / from page | 9 |
| Kopplingar / Unions | från sidan / from page | 13 |
| - översikt / Union surveys | från sidan / from page | 13 |
| Clampkoppling / Clamp unions | från sidan / from page | 24 |
| - översikt / Clamp surveys | från sidan / from page | 22 |
| Miniclampkoppling / Mini clamp | från sidan / from page | 28 |
| - översikt / Mini Clamp surveys | från sidan / from page | 23 |
| Kopplingsnyckel / Spanner | från sidan / from page | 29 |
| Backventiler / Check valves | från sidan / from page | 29 |
| Skivventiler / Butterfly valve | från sidan / from page | 30 |
| Aseptiska rör / Aseptic pipes | från sidan / from page | 31 |
| Aseptiska böjar / Aseptic elbow | från sidan / from page | 32 |
| Aseptiska t-rör / Aseptic Tee | från sidan / from page | 33 |
| Aseptiska konor / Aseptic reducers | från sidan / from page | 33 |
| Aseptisk clampkoppling / Aseptic clamp unions | från sidan / from page | 34 |

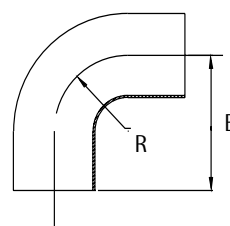
Böjar N130

SMS/DS Svetsade böjar, 90° kort

SMS/DS Welded elbow, 90° short type

Cert.: EN 10204/3.1

| Dim. mm | B mm | R mm | Kg/ st/pc | AISI 304 | | 316L | |
|-------------|---------|---------|--------------|------------------------|------------------------|------------------------|------------------------|
| | | | | Varunr. Article no. | Varunr. Article no. | Varunr. Article no. | Varunr. Article no. |
| 25,0 x 1,2 | 55,0 | 25,0 | 0,067 | ● 25000 | ● 25001 | | |
| 32,0 x 1,2 | 64,0 | 32,0 | 0,101 | ● 25002 | ● 25003 | | |
| 38,0 x 1,2 | 70,0 | 38,0 | 0,138 | ● 25004 | ● 25005 | | |
| 51,0 x 1,2 | 82,0 | 51,0 | 0,208 | ● 25006 | ● 25007 | | |
| 63,5 x 1,6 | 105,0 | 64,0 | 0,440 | ● 25008 | ● 25009 | | |
| 76,1 x 2,0 | 110,0 | 76,0 | 0,645 | ● 25010 | ● 25011 | | |
| 101,6 x 2,0 | 150,0 | 150,0 | 1,107 | ● 25012 | ● 25013 | | |



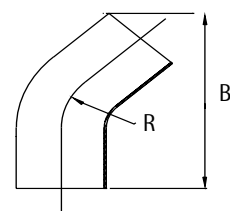
Böjar N130

SMS/DS Svetsade böjar, 45°

SMS/DS Welded elbow, 45°

Cert.: EN 10204/3.1

| Dim. mm | B mm | R mm | Kg/ st/pc | AISI 304 | | 316L | |
|-------------|---------|---------|--------------|------------------------|------------------------|------------------------|------------------------|
| | | | | Varunr. Article no. | Varunr. Article no. | Varunr. Article no. | Varunr. Article no. |
| 25,0 x 1,2 | 70,0 | 25,0 | 0,049 | ● 25014 | ● 25015 | | |
| 38,0 x 1,2 | 87,0 | 38,0 | 0,089 | ● 25016 | ● 25017 | | |
| 51,0 x 1,2 | 119,5 | 51,0 | 0,162 | ● 25018 | ● 25019 | | |
| 63,5 x 1,6 | 136,0 | 64,0 | 0,301 | ● 25020 | ● 25021 | | |
| 76,1 x 2,0 | 157,0 | 76,0 | 0,524 | ● 25022 | ● 25023 | | |
| 101,6 x 2,0 | 226,5 | 150,0 | 1,045 | ● 25024 | ● 25025 | | |



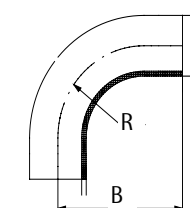
Böjar N130

ISO Svetsade böjar, 90°

SMS/DS Welded elbow, 90°

Cert.: EN 10204/3.1

| Dim. mm | B mm | R mm | Kg/ st/pc | AISI 304 | | 316L | |
|-------------|---------|---------|--------------|------------------------|------------------------|------------------------|------------------------|
| | | | | Varunr. Article no. | Varunr. Article no. | Varunr. Article no. | Varunr. Article no. |
| 25,0 x 1,2 | 65,0 | 37,5 | 0,053 | ● 18275 | ● 18285 | | |
| 38,0 x 1,2 | 85,0 | 57,0 | 0,167 | ● 18276 | ● 18286 | | |
| 51,0 x 1,2 | 110,0 | 76,5 | 0,297 | ● 18277 | ● 18287 | | |
| 63,5 x 1,6 | 135,0 | 95,3 | 0,538 | ● 18278 | ● 18288 | | |
| 76,1 x 1,6 | 155,0 | 114,2 | 0,770 | ● 18279 | ● 18289 | | |
| 101,6 x 2,0 | 195,0 | 152,5 | 1,588 | ● 18280 | ● 18290 | | |



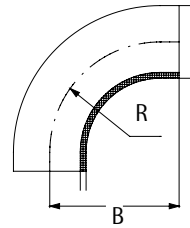
Böjar N130

ISO Svetsade böjar, 90°, med kort rakända

ISO Welded elbow, 90°, with short straight ends

Cert.: EN 10204/3.1

| Dim. mm | B mm | R mm | Kg/ st/pc | 316L Varunr. Article no. |
|-------------|---------|---------|--------------|--------------------------------|
| 25,0 x 1,2 | 44 | 37,5 | 0,070 | ● 32842 |
| 38,0 x 1,2 | 64 | 57,0 | 0,130 | ● 32843 |
| 51,0 x 1,2 | 89 | 76,5 | 0,290 | ● 32844 |
| 63,5 x 1,6 | 114 | 95,3 | 0,590 | ● 32845 |
| 76,1 x 1,6 | 134 | 114,2 | 0,730 | ● 32846 |
| 101,6 x 2,0 | 174 | 152,5 | 1,130 | ● 32847 |



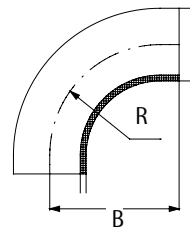
Böjar N130

ISO Svetsade böjar, 90°, utan rakändar

ISO Welded elbow, 90° without straight ends

Cert.: EN 10204/3.1

| Dim. mm | B mm | R mm | Kg/ st/pc | 316L Varunr. Article no. |
|-------------|---------|---------|--------------|--------------------------------|
| 25,0 x 1,2 | 38,1 | 37,5 | 0,070 | ● 33411 |
| 38,0 x 1,2 | 57,2 | 57,0 | 0,130 | ● 33412 |
| 51,0 x 1,2 | 76,2 | 76,5 | 0,290 | ● 33413 |
| 63,5 x 1,6 | 95,2 | 95,3 | 0,590 | ● 33414 |
| 76,1 x 1,6 | 114,3 | 114,2 | 0,730 | ● 33415 |
| 101,6 x 2,0 | 152,4 | 152,5 | 1,130 | ● 33416 |



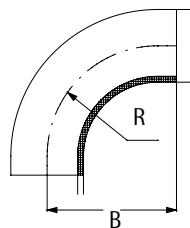
Böjar N130

SMS Svetsade böjar, 90°, lång

SMS Welded elbow, 90°, long

Cert.: EN 10204/3.1

| Dim. mm | B mm | R mm | Kg/ st/pc | AISI 304 Varunr. Article no. | 316L Varunr. Article no. |
|------------|---------|---------|--------------|------------------------------------|--------------------------------|
| 25,0 x 1,2 | 80,0 | 50,0 | 0,090 | ● 27345 | ● 27365 |
| 38,0 x 1,2 | 105,0 | 70,0 | 0,198 | ● 27346 | ● 27366 |
| 51,0 x 1,2 | 130,0 | 95,0 | 0,314 | ● 27347 | ● 27367 |
| 63,5 x 1,5 | 160,0 | 120,0 | 0,318 | ● 27348 | ● 27368 |



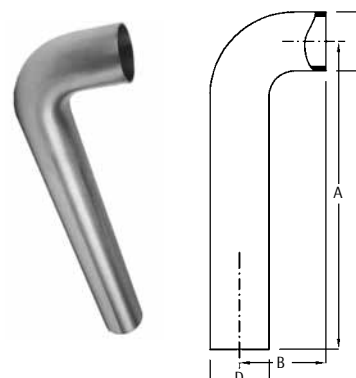
Böjar N130

SMS/DS Svetsade böjar, förlängda 200 mm

SMS/DS Welded elbow, 90 deg. length 200 mm

Cert.: EN 10204/3.1

| Dim. mm | A mm | B mm | R mm | Kg/ st/pc | 304 Varunr. Article no. |
|------------|---------|---------|---------|--------------|-------------------------------|
| 25,0 x 1,2 | 255,0 | 55,0 | 25,0 | 0,240 | ● 27350 |
| 38,0 x 1,2 | 270,0 | 70,0 | 38,0 | 0,370 | ● 27351 |
| 51,0 x 1,2 | 282,0 | 82,0 | 52,0 | 0,520 | ● 27352 |
| 63,5 x 1,6 | 305,0 | 105,0 | 63,5 | 0,890 | ● 27353 |
| 76,1 x 2,0 | 310,0 | 110,0 | 76,1 | 1,370 | ● 27354 |



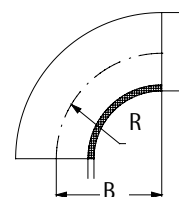
Böjar N130

DIN Svetsade böjar, 90°

DIN Welded elbow, 90°

Cert.: EN 10204/3.1

| Dim. mm | DIN DN | B mm | R mm | Kg/ st/pc | 316L Varunr. Article no. |
|-------------|-----------|---------|---------|--------------|--------------------------------|
| 12,0 x 1,5 | 10 | 26,0 | 26,0 | 0,014 | ● 32848 |
| 18,0 x 1,5 | 15 | 35,0 | 35,0 | 0,032 | ● 32849 |
| 22,0 x 1,5 | 20 | 40,0 | 40,0 | 0,046 | ● 32850 |
| 28,0 x 1,5 | 25 | 50,0 | 50,0 | 0,070 | ● 32851 |
| 40,0 x 1,5 | 40 | 60,0 | 60,0 | 0,130 | ● 32852 |
| 52,0 x 1,5 | 50 | 70,0 | 70,0 | 0,200 | ● 32853 |
| 70,0 x 2,0 | 65 | 80,0 | 80,0 | 0,350 | ● 32854 |
| 85,0 x 2,0 | 80 | 90,0 | 90,0 | 0,540 | ● 32855 |
| 104,0 x 2,0 | 100 | 100,0 | 100,0 | 0,730 | ● 32856 |
| 129,0 x 2,0 | 125 | 187,5 | 187,5 | 1,870 | ● 32857 |
| 154,0 x 2,0 | 150 | 225,0 | 225,0 | 2,696 | ● 32858 |
| 204,0 x 2,0 | 200 | 300,0 | 300,0 | 4,750 | ● 32859 |
| 254,0 x 2,0 | 250 | 375,0 | 375,0 | 8,875 | ▶ 32860 |



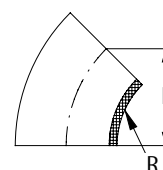
Böjar N130

DIN Svetsade böjar, 45°

DIN Welded elbow, 45°

Cert.: EN 10204/3.1

| Dim. mm | DIN DN | B mm | R mm | Kg/ st/pc | 316L Varunr. Article no. |
|-------------|-----------|---------|---------|--------------|--------------------------------|
| 28,0 x 1,5 | 25 | 34,3 | 50,0 | 0,040 | ▶ 32861 |
| 40,0 x 1,5 | 40 | 37,8 | 60,0 | 0,070 | ▶ 32862 |
| 52,0 x 1,5 | 50 | 48,4 | 70,0 | 0,100 | ▶ 32863 |
| 70,0 x 2,0 | 65 | 55,5 | 80,0 | 0,200 | ▶ 32864 |
| 85,0 x 2,0 | 80 | 62,6 | 90,0 | 0,290 | ▶ 32865 |
| 104,0 x 2,0 | 100 | 69,6 | 100,0 | 0,380 | ▶ 32866 |
| 129,0 x 2,0 | 125 | 131,5 | 187,5 | 0,935 | ▶ 32867 |
| 154,0 x 2,0 | 150 | 158,0 | 225,0 | 1,340 | ▶ 32868 |



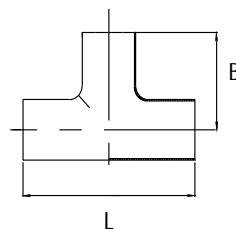
T-rör N131

SMS/DS/ISO Svetsade T-rör

SMS/DS/ISO Welded Tee

Cert.: EN 10204/3.1

| Dim. mm | L mm | B mm | Kg/ st/pc | AISI | |
|-------------|---------|---------|--------------|------------------------|------------------------|
| | | | | 304 | 316L |
| | | | | Varunr. Article no. | Varunr. Article no. |
| 25,0 x 1,2 | 110,0 | 55,0 | 0,120 | ● 25026 | ● 25027 |
| 32,0 x 1,2 | 128,0 | 64,0 | 0,170 | ● 25028 | ▶ 813000 |
| 38,0 x 1,2 | 140,0 | 70,0 | 0,220 | ● 25030 | ● 25029 |
| 51,0 x 1,2 | 164,0 | 82,0 | 0,340 | ● 25032 | ● 25031 |
| 63,5 x 1,6 | 210,0 | 105,0 | 0,655 | ● 25034 | ● 25033 |
| 76,1 x 2,0 | 220,0 | 110,0 | 1,090 | ● 25036 | ● 25035 |
| 101,6 x 2,0 | 300,0 | 150,0 | 1,950 | ● 25038 | ● 25037 |



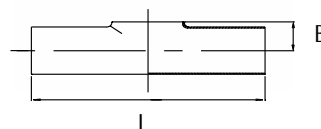
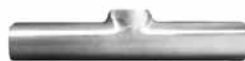
T-rör N131

SMS/DS/ISO Svetsade T-rör, uppkragat

SMS/DS/ISO Welded Tee, short branch

Cert.: EN 10204/3.1

| Dim. mm | L mm | B mm | Kg/ st/pc | AISI | |
|-------------|---------|---------|--------------|------------------------|------------------------|
| | | | | 304 | 316L |
| | | | | Varunr. Article no. | Varunr. Article no. |
| 25,0 x 1,2 | 110,0 | 14,5 | 0,090 | ● 25040 | ● 25041 |
| 38,0 x 1,2 | 140,0 | 21,5 | 0,160 | ● 25042 | ● 25043 |
| 51,0 x 1,2 | 164,0 | 29,0 | 0,260 | ● 25044 | ● 25045 |
| 63,5 x 1,6 | 210,0 | 35,0 | 0,490 | ● 25046 | ● 25047 |
| 76,1 x 2,0 | 220,0 | 43,0 | 0,830 | ● 25048 | ● 25049 |
| 101,6 x 2,0 | 300,0 | 56,0 | 1,480 | ● 25050 | ● 25051 |

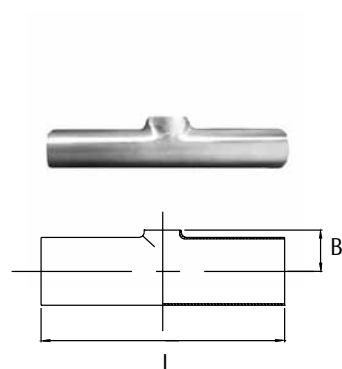


T-rör N131

SMS/DS/ISO Svetsade T-rör uppkragat reducerat avstick
SMS/DS/ISO Welded Tee, reduced short branch

Cert.: EN 10204/3.1

| Dim. mm | L mm | B mm | Kg/ st/pc | AISI | 316L |
|--------------------|---------|---------|--------------|------------------------|-------|
| | | | | Varunr. Article no. | |
| 38,0 x 25,0 x 1,2 | 140,0 | 22,0 | 0,160 | ● | 25052 |
| 51,0 x 25,0 x 1,2 | 164,0 | 29,0 | 0,260 | ● | 25053 |
| 51,0 x 38,0 x 1,2 | 164,0 | 29,0 | 0,260 | ● | 25054 |
| 63,5 x 25,0 x 1,6 | 210,0 | 35,0 | 0,490 | ● | 25055 |
| 63,5 x 38,0 x 1,6 | 210,0 | 36,0 | 0,490 | ● | 25056 |
| 63,5 x 51,0 x 1,6 | 210,0 | 35,0 | 0,830 | ● | 25057 |
| 76,1 x 25,0 x 2,0 | 220,0 | 43,0 | 0,840 | ● | 32450 |
| 76,1 x 38,0 x 2,0 | 220,0 | 43,0 | 0,830 | ● | 25058 |
| 76,1 x 51,0 x 2,0 | 220,0 | 43,0 | 0,830 | ● | 25059 |
| 76,1 x 63,5 x 2,0 | 220,0 | 43,0 | 0,830 | ● | 25060 |
| 101,6 x 25,0 x 2,0 | 300,0 | 56,0 | 1,500 | ● | 32451 |
| 101,6 x 38,0 x 2,0 | 300,0 | 56,0 | 1,490 | ● | 32452 |
| 101,6 x 51,0 x 2,0 | 300,0 | 56,0 | 1,480 | ● | 25061 |
| 101,6 x 63,5 x 2,0 | 300,0 | 56,0 | 1,480 | ● | 25062 |
| 101,6 x 76,1 x 2,0 | 300,0 | 56,0 | 1,480 | ● | 25063 |

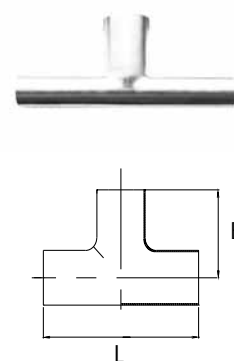


T-rör N131

DIN Svetsade T-rör
DIN Welded Tee

Cert.: EN 10204/3.1

| Dim. mm | DIN DN | L mm | B mm | Kg/ st/pc | 316L |
|-------------|-----------|---------|---------|--------------|------------------------|
| | | | | | Varunr. Article no. |
| 12,0 x 1,5 | 10 | 52,0 | 26,0 | 0,028 | ▶ 32869 |
| 18,0 x 1,5 | 15 | 70,0 | 35,0 | 0,056 | ▶ 32870 |
| 22,0 x 1,5 | 20 | 80,0 | 40,0 | 0,084 | ▶ 32871 |
| 28,0 x 1,5 | 25 | 100,0 | 50,0 | 0,110 | ● 32872 |
| 40,0 x 1,5 | 40 | 120,0 | 60,0 | 0,210 | ▶ 32873 |
| 52,0 x 1,5 | 50 | 140,0 | 70,0 | 0,310 | ▶ 32874 |
| 70,0 x 2,0 | 65 | 160,0 | 80,0 | 0,630 | ▶ 32875 |
| 85,0 x 2,0 | 80 | 180,0 | 90,0 | 0,870 | ● 32876 |
| 104,0 x 2,0 | 100 | 200,0 | 100,0 | 1,060 | ▶ 32877 |
| 129,0 x 2,0 | 125 | 375,0 | 187,5 | 2,900 | ▶ 32878 |
| 154,0 x 2,0 | 150 | 450,0 | 225,0 | 4,200 | ▶ 32879 |
| 204,0 x 2,0 | 200 | 600,0 | 300,0 | 7,500 | ▶ 32880 |



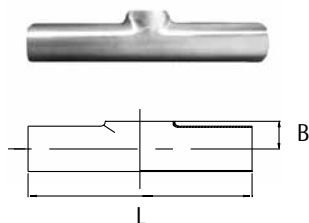
T-rör N131

DIN Svetsade T-rör uppkragat

DIN Welded Tee, short branch

Cert.: EN 10204/3.1

| Dim. mm | DIN DN | L mm | B mm | Kg/ st/pc | 316L Varunr. Article no. |
|-------------|-----------|---------|---------|--------------|--------------------------------|
| 12,0 x 1,5 | 10 | 52,0 | 8,0 | 0,020 | ● 32881 |
| 18,0 x 1,5 | 15 | 70,0 | 11,5 | 0,044 | ● 32882 |
| 22,0 x 1,5 | 20 | 80,0 | 14,5 | 0,059 | ● 32883 |
| 28,0 x 1,5 | 25 | 100,0 | 16,0 | 0,080 | ● 32884 |
| 40,0 x 1,5 | 40 | 120,0 | 22,0 | 0,150 | ● 32885 |
| 52,0 x 1,5 | 50 | 140,0 | 29,5 | 0,240 | ● 32886 |
| 70,0 x 2,0 | 65 | 160,0 | 40,0 | 0,480 | ● 32887 |
| 85,0 x 2,0 | 80 | 180,0 | 45,5 | 0,628 | ● 32888 |
| 104,0 x 2,0 | 100 | 200,0 | 58,0 | 0,910 | ● 32889 |
| 129,0 x 2,0 | 125 | 375,0 | 72,0 | 2,168 | ● 32890 |
| 154,0 x 2,0 | 150 | 450,0 | 87,0 | 3,040 | ● 32891 |
| 204,0 x 2,0 | 200 | 600,0 | 111,0 | 5,950 | ● 32892 |



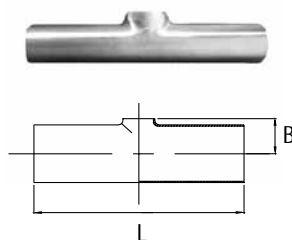
T-rör N131

DIN Svetsade T-rör uppkragat reducerat avstick

DIN Welded Tee, short branch

Cert.: EN 10204/3.1

| Dim. mm | DIN DN | L mm | B mm | Kg/ st/pc | 316L Varunr. Article no. |
|--------------------|-----------|---------|---------|--------------|--------------------------------|
| 34,0 x 28,0 x 1,5 | 32/25 | 110,0 | 19,0 | 0,146 | ▶ 32893 |
| 40,0 x 28,0 x 1,5 | 40/25 | 120,0 | 23,0 | 0,160 | ▶ 32894 |
| 40,0 x 34,0 x 1,5 | 40/32 | 120,0 | 23,0 | 0,152 | ▶ 32895 |
| 52,0 x 28,0 x 1,5 | 50/25 | 140,0 | 29,0 | 0,242 | ▶ 32896 |
| 52,0 x 34,0 x 1,5 | 50/32 | 140,0 | 29,0 | 0,232 | ▶ 32897 |
| 52,0 x 40,0 x 1,5 | 50/40 | 140,0 | 29,0 | 0,246 | ▶ 32898 |
| 70,0 x 28,0 x 2,0 | 65/25 | 160,0 | 38,0 | 0,520 | ▶ 32899 |
| 70,0 x 34,0 x 2,0 | 65/32 | 160,0 | 39,0 | 0,495 | ▶ 32900 |
| 70,0 x 40,0 x 2,0 | 65/40 | 160,0 | 39,0 | 0,580 | ▶ 32901 |
| 70,0 x 52,0 x 2,0 | 65/50 | 160,0 | 39,0 | 0,540 | ▶ 32902 |
| 85,0 x 28,0 x 2,0 | 80/25 | 180,0 | 45,5 | 0,736 | ▶ 32903 |
| 85,0 x 34,0 x 2,0 | 80/32 | 180,0 | 46,0 | 0,720 | ▶ 32904 |
| 85,0 x 40,0 x 2,0 | 80/40 | 180,0 | 46,5 | 0,705 | ▶ 32905 |
| 85,0 x 52,0 x 2,0 | 80/50 | 180,0 | 47,5 | 0,698 | ▶ 32906 |
| 85,0 x 70,0 x 2,0 | 80/65 | 180,0 | 47,0 | 0,676 | ▶ 32907 |
| 104,0 x 28,0 x 2,0 | 100/25 | 200,0 | 56,0 | 0,952 | ● 32908 |
| 104,0 x 40,0 x 2,0 | 100/40 | 200,0 | 56,0 | 0,928 | ▶ 32909 |
| 104,0 x 52,0 x 2,0 | 100/50 | 200,0 | 58,0 | 0,901 | ▶ 32910 |
| 104,0 x 70,0 x 2,0 | 100/65 | 200,0 | 58,0 | 0,916 | ▶ 32911 |
| 104,0 x 85,0 x 2,0 | 100/80 | 200,0 | 58,0 | 0,916 | ▶ 32912 |

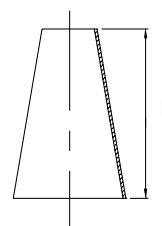


Konor N132

SMS/DS/ISO Svetsade konor, koncentriska
SMS/DS/ISO Welded concentric reducer

Cert.: EN 10204/3.1

| Dim. mm | L mm | Kg/ st/pc | AISI | 316L |
|--------------------|---------|--------------|------------------------|-------|
| | | | Varunr. Article no. | |
| 38,0 x 25,0 x 1,2 | 44,0 | 0,050 | ● | 25069 |
| 51,0 x 25,0 x 1,2 | 86,0 | 0,100 | ● | 25070 |
| 51,0 x 38,0 x 1,2 | 42,0 | 0,070 | ● | 25071 |
| 63,5 x 38,0 x 1,2 | 82,0 | 0,120 | ● | 25072 |
| 63,5 x 51,0 x 1,2 | 40,0 | 0,080 | ● | 25073 |
| 76,1 x 38,0 x 1,2 | 71,0 | 0,200 | ● | 33272 |
| 76,1 x 51,0 x 1,2 | 79,0 | 0,210 | ● | 25074 |
| 76,1 x 63,5 x 1,6 | 39,0 | 0,110 | ● | 25075 |
| 101,6 x 51,0 x 2,0 | 95,0 | 0,350 | ● | 33271 |
| 101,6 x 63,5 x 2,0 | 120,0 | 0,400 | ● | 27727 |
| 101,6 x 76,1 x 2,0 | 81,0 | 0,350 | ● | 25076 |

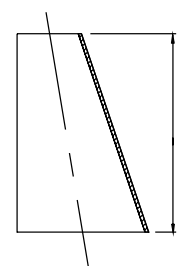


Konor N132

SMS/DS/ISO Svetsade konor, excentriska
SMS/DS/ISO Welded eccentric reducer

Cert.: EN 10204/3.1

| Dim. mm | L mm | Kg/ st/pc | AISI | 316L |
|--------------------|---------|--------------|------------------------|-------|
| | | | Varunr. Article no. | |
| 38,0 x 25,0 x 1,2 | 44,0 | 0,050 | ● | 25077 |
| 51,0 x 25,0 x 1,2 | 86,0 | 0,100 | ● | 25078 |
| 51,0 x 38,0 x 1,2 | 42,0 | 0,070 | ● | 25079 |
| 63,5 x 38,0 x 1,2 | 82,0 | 0,120 | ● | 25080 |
| 63,5 x 51,0 x 1,2 | 40,0 | 0,080 | ● | 25081 |
| 76,1 x 38,0 x 1,2 | 109,0 | 0,200 | ● | 33273 |
| 76,1 x 51,0 x 1,2 | 79,0 | 0,210 | ● | 25082 |
| 76,1 x 63,5 x 1,5 | 39,0 | 0,110 | ● | 25083 |
| 101,6 x 51,0 x 2,0 | 140,0 | 0,275 | ● | 33274 |
| 101,6 x 63,5 x 2,0 | 102,0 | 0,300 | ● | 33275 |
| 101,6 x 76,1 x 2,0 | 81,0 | 0,350 | ● | 25084 |



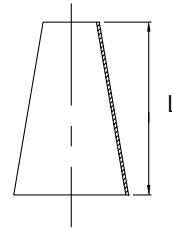
Konor N132

DIN Svetsade konor, koncentriska

DIN Welded concentric reducer

Cert.: EN 10204/3.1

| Dim. mm | DIN DN | L mm | Kg/ st/pc | 316L Varunr. Article no. |
|---------------------|-----------|---------|--------------|--------------------------------|
| 28,0 x 12,0 x 1,5 | 25/10 | 30,4 | 0,024 | ● 32913 |
| 34,0 x 28,0 x 1,5 | 32/25 | 11,2 | 0,020 | ● 32914 |
| 40,0 x 28,0 x 1,5 | 40/25 | 22,4 | 0,030 | ● 32915 |
| 40,0 x 34,0 x 1,5 | 40/32 | 12,3 | 0,030 | ▶ 32916 |
| 52,0 x 28,0 x 1,5 | 50/25 | 44,8 | 0,060 | ▶ 32917 |
| 52,0 x 34,0 x 1,5 | 50/32 | 33,6 | 0,060 | ▶ 32918 |
| 52,0 x 40,0 x 1,5 | 50/40 | 22,6 | 0,050 | ● 32919 |
| 70,0 x 34,0 x 2,0 | 65/40 | 54,7 | 0,110 | ▶ 32920 |
| 70,0 x 52,0 x 2,0 | 65/50 | 31,9 | 0,090 | ● 32921 |
| 85,0 x 40,0 x 2,0 | 80/40 | 80,3 | 0,210 | ▶ 32922 |
| 85,0 x 52,0 x 2,0 | 80/50 | 60,4 | 0,110 | ● 32923 |
| 85,0 x 70,0 x 2,0 | 80/65 | 28,5 | 0,120 | ▶ 32924 |
| 104,0 x 52,0 x 2,0 | 100/50 | 95,2 | 0,340 | ▶ 32925 |
| 104,0 x 70,0 x 2,0 | 100/65 | 63,4 | 0,230 | ▶ 32926 |
| 104,0 x 85,0 x 2,0 | 100/80 | 35,5 | 0,160 | ● 32927 |
| 129,0 x 104,0 x 2,0 | 125/100 | 46,7 | 0,254 | ● 32928 |
| 154,0 x 129,0 x 2,0 | 150/125 | 46,7 | 0,316 | ● 32960 |



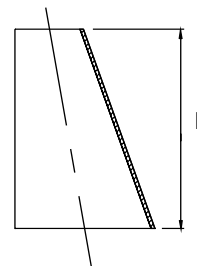
Konor N132

DIN Svetsade konor, excentriska

DIN Welded eccentric reducer

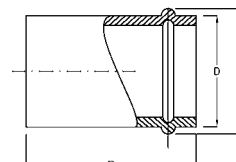
Cert.: EN 10204/3.1

| Dim. mm | DIN DN | L mm | Kg/ st/pc | 316L Varunr. Article no. |
|--------------------|-----------|---------|--------------|--------------------------------|
| 34,0 x 28,0 x 1,5 | 32/25 | 19,0 | 0,040 | ▶ 32929 |
| 40,0 x 28,0 x 1,5 | 40/25 | 34,7 | 0,050 | ▶ 32930 |
| 40,0 x 34,0 x 1,5 | 40/32 | 18,8 | 0,060 | ▶ 32931 |
| 52,0 x 28,0 x 1,5 | 50/25 | 65,9 | 0,080 | ▶ 32932 |
| 52,0 x 34,0 x 1,5 | 50/32 | 49,5 | 0,110 | ▶ 32933 |
| 52,0 x 40,0 x 1,5 | 50/40 | 33,0 | 0,070 | ▶ 32934 |
| 70,0 x 40,0 x 2,0 | 65/40 | 81,8 | 0,170 | ▶ 32935 |
| 70,0 x 52,0 x 2,0 | 65/50 | 49,1 | 0,110 | ▶ 32936 |
| 85,0 x 40,0 x 2,0 | 80/40 | 120,9 | 0,250 | ▶ 32937 |
| 85,0 x 52,0 x 2,0 | 80/50 | 95,5 | 0,210 | ▶ 32938 |
| 85,0 x 70,0 x 2,0 | 80/65 | 41,2 | 0,140 | ▶ 32939 |
| 104,0 x 70,0 x 2,0 | 100/65 | 94,8 | 0,216 | ▶ 32940 |
| 104,0 x 85,0 x 2,0 | 100/80 | 49,4 | 0,154 | ▶ 32941 |



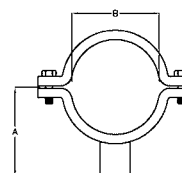
Slanghylsa
Hose liner, straight

| Ansl mm | B mm | C mm | D mm | Kg/ st/pc | 316L Varunr. Article no. |
|------------|---------|---------|---------|--------------|--------------------------------|
| 25,0 | 42,0 | 29,0 | 25,0 | 0,035 | ● 27520 |
| 38,0 | 71,0 | 42,0 | 38,0 | 0,056 | ● 27521 |
| 51,0 | 101,0 | 55,0 | 51,0 | 0,090 | ● 27522 |
| 63,0 | 116,0 | 67,0 | 63,5 | 0,180 | ● 27523 |
| 76,0 | 140,0 | 80,0 | 76,0 | 0,348 | ● 27524 |



Rörhållare Trönningehållare, dubbel med fot
Rörhållare med svetsfot och skruvar, SMS/DS
Pipe support with shaft and hexagon screw, SMS/DS

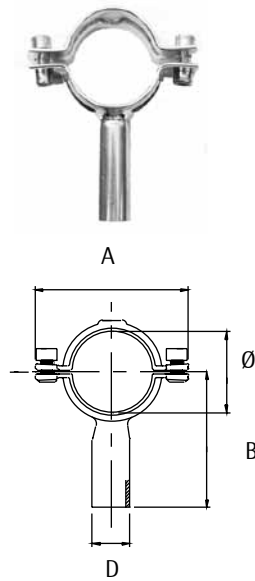
| Dim. mm | A mm | B mm | Kg/ st/pc | 316L Varunr. Article no. |
|------------|---------|---------|--------------|--------------------------------|
| 25 | 51,5 | 25,0 | 0,076 | ● 27510 |
| 38 | 51,5 | 38,0 | 0,136 | ● 27511 |
| 51 | 51,5 | 51,0 | 0,156 | ● 27512 |
| 63,5 | 51,5 | 63,5 | 0,216 | ● 27513 |
| 76,1 | 51,5 | 76,1 | 0,236 | ● 27514 |
| 101,6 | 70,0 | 101,6 | 0,318 | ● 27515 |



Rörhållare N134

Rörhållare med rörskaf, unbrako skruv, bred model, SMS/DS
 Pipe support with shaft, hexagon socket cap screw, wide type

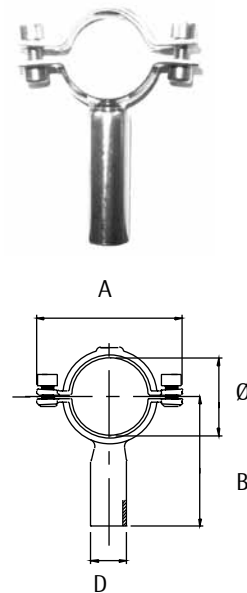
| Dim. mm | B mm | A mm | Ø mm | D mm | Kg/ st/pc | AISI 304 | Varunr. Article no. |
|------------|---------|---------|---------|---------|--------------|----------|------------------------|
| 25,0 | 90,0 | 80,0 | 27,0 | 21,3 | 0,260 | ● | 32942 |
| 38,0 | 90,0 | 93,0 | 40,0 | 21,3 | 0,280 | ● | 32943 |
| 51,0 | 90,0 | 103,0 | 53,0 | 21,3 | 0,300 | ● | 32944 |
| 63,5 | 90,0 | 118,0 | 65,5 | 21,3 | 0,320 | ● | 32945 |
| 76,1 | 90,0 | 132,0 | 78,0 | 21,3 | 0,340 | ● | 32946 |
| 101,6 | 90,0 | 157,0 | 104,0 | 21,3 | 0,380 | ● | 32947 |
| 25,0 | 150,0 | 80,0 | 27,0 | 21,3 | 0,260 | ● | 32948 |
| 38,0 | 150,0 | 93,0 | 40,0 | 21,3 | 0,300 | ● | 32949 |
| 51,0 | 150,0 | 106,0 | 53,0 | 21,3 | 0,300 | ● | 32950 |
| 63,5 | 150,0 | 118,0 | 65,5 | 21,3 | 0,320 | ● | 32951 |
| 76,1 | 150,0 | 132,0 | 78,0 | 21,3 | 0,340 | ● | 32952 |
| 101,6 | 150,0 | 157,0 | 104,0 | 21,3 | 0,380 | ● | 32953 |



Rörhållare N114

Rörhållare med svetsat rörskaf och unbrako skruv, DIN
 Pipe support with shaft, hexagon socket cap screw, DIN

| Dim. mm | B mm | A mm | Ø mm | D mm | Kg/ st/pc | AISI 304 | Varenr. Article no. |
|------------|---------|---------|---------|---------|--------------|----------|------------------------|
| 18- 21,0 | 90,0 | 72,0 | 21,0 | 21,3 | 0,209 | ● | 20329 |
| 25- 26,0 | 90,0 | 80,0 | 26,0 | 21,3 | 0,224 | ● | 20330 |
| 29- 31,0 | 90,0 | 80,0 | 31,0 | 21,3 | 0,225 | ● | 20331 |
| 36- 38,0 | 90,0 | 91,0 | 38,0 | 21,3 | 0,242 | ● | 20332 |
| 45- 46,0 | 90,0 | 99,0 | 46,0 | 21,3 | 0,256 | ● | 20333 |
| 54- 56,0 | 90,0 | 107,0 | 56,0 | 21,3 | 0,271 | ● | 20334 |
| 70- 71,0 | 90,0 | 123,0 | 71,0 | 21,3 | 0,298 | ● | 20335 |
| 75- 76,0 | 90,0 | 129,0 | 76,0 | 21,3 | 0,307 | ● | 20336 |
| 84- 86,0 | 90,0 | 137,0 | 86,0 | 21,3 | 0,323 | ● | 20337 |
| 104-106,0 | 102,0 | 157,0 | 106,0 | 21,3 | 0,368 | ● | 20338 |
| 129-131,0 | 105,0 | 182,0 | 131,0 | 21,3 | 0,420 | ● | 20339 |
| 154-156,0 | 128,0 | 207,0 | 156,0 | 21,3 | 0,479 | ● | 20340 |
| 204-206,0 | 152,0 | 257,0 | 206,0 | 21,3 | 0,533 | ● | 20341 |



Rörhållare N134

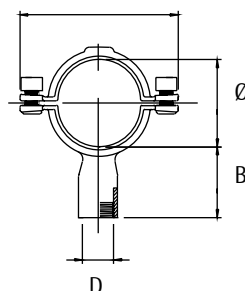
Rörhållare med rörskafv och 1/2" muff, unbrako skruv, bred model

Pipe support with shaft, hexagon socket cap screw wide type, tube end with 1/2" socket

| Dim. mm | B mm | A mm | Ø mm | D mm | Kg/ st/pc | AISI | 304 | Varunr. Article no. |
|------------|---------|---------|---------|---------|--------------|------|-----|------------------------|
| 25,0 | 45,0 | 80,0 | 27,0 | 23,1 | 0,170 | | | ● 32954 |
| 38,0 | 45,0 | 93,0 | 40,0 | 23,1 | 0,190 | | | ● 32955 |
| 51,0 | 45,0 | 106,0 | 53,0 | 23,1 | 0,220 | | | ● 32956 |
| 63,5 | 45,0 | 118,0 | 65,5 | 23,1 | 0,270 | | | ● 32957 |
| 76,1 | 45,0 | 132,0 | 78,0 | 23,1 | 0,300 | | | ● 32958 |
| 101,6 | 45,0 | 157,0 | 104,0 | 23,1 | 0,350 | | | ● 32959 |



A



Rörhållare N134

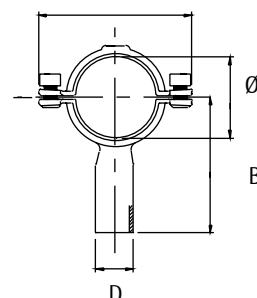
Rörhållare med rörskafv och plastinlägg

Pipe clips with welded shaft

| Dim. mm | B mm | A mm | Ø mm | D mm | Kg/ st/pc | AISI | 304 | Varunr. Article no. |
|------------|---------|---------|---------|---------|--------------|------|-----|------------------------|
| 25,0 | 90,0 | 80,0 | 27,0 | 20,0 | 0,260 | | | ● 25085 |
| 38,0 | 90,0 | 93,0 | 40,0 | 20,0 | 0,280 | | | ● 25086 |
| 51,0 | 90,0 | 103,0 | 53,0 | 20,0 | 0,300 | | | ● 25087 |
| 63,5 | 90,0 | 118,0 | 65,5 | 20,0 | 0,320 | | | ● 25088 |
| 76,1 | 90,0 | 132,0 | 78,0 | 20,0 | 0,340 | | | ● 25089 |
| 101,6 | 90,0 | 157,0 | 104,0 | 20,0 | 0,380 | | | ● 25090 |
| 25,0 | 150,0 | 80,0 | 27,0 | 20,0 | 0,260 | | | ● 25091 |
| 38,0 | 150,0 | 93,0 | 40,0 | 20,0 | 0,300 | | | ● 25092 |
| 51,0 | 150,0 | 106,0 | 53,0 | 20,0 | 0,300 | | | ● 25093 |
| 63,5 | 150,0 | 118,0 | 65,5 | 20,0 | 0,320 | | | ● 25094 |
| 76,1 | 150,0 | 132,0 | 78,0 | 20,0 | 0,340 | | | ● 25095 |
| 101,6 | 150,0 | 157,0 | 104,0 | 20,0 | 0,380 | | | ● 25096 |



A

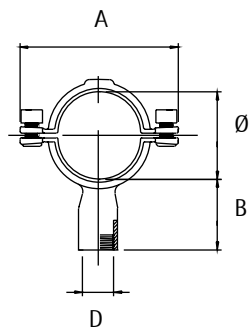


Rörhållare N134

Rörhållare med kort rörskافت, plastinlägg och 1/2" muff

Pipe clips tube end with 1/2" socket

| Dim. mm | B mm | A mm | Ø mm | D mm | Kg/ st/pc | AISI 304 | Varunr. Article no. |
|------------|---------|---------|---------|---------|--------------|----------|------------------------|
| 25,0 | 45,0 | 80,0 | 27,0 | 28,0 | 0,170 | ● | 25097 |
| 38,0 | 45,0 | 93,0 | 40,0 | 28,0 | 0,190 | ● | 25098 |
| 51,0 | 45,0 | 106,0 | 53,0 | 28,0 | 0,220 | ● | 25099 |
| 63,5 | 45,0 | 118,0 | 65,5 | 28,0 | 0,270 | ● | 25100 |
| 76,1 | 45,0 | 132,0 | 78,0 | 28,0 | 0,300 | ● | 25101 |
| 101,6 | 45,0 | 157,0 | 104,0 | 28,0 | 0,350 | ● | 25102 |

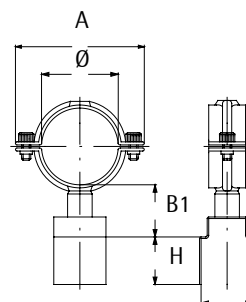


Rörhållare N134

Rörhållare för 40 x 60 mm rör

Pipe clips for 40 x 60 mm pipe

| Dim. mm | B1 mm | H mm | A mm | Ø mm | Kg/ st/pc | AISI 304 | Varunr. Article no. |
|------------|----------|---------|---------|---------|--------------|----------|------------------------|
| 25,0 | 50,0 | 30,0 | 78,0 | 27,0 | 0,24 | ● | 25103 |
| 38,0 | 50,0 | 30,0 | 91,0 | 40,0 | 0,26 | ● | 25104 |
| 51,0 | 50,0 | 30,0 | 104,0 | 53,0 | 0,29 | ● | 25105 |
| 63,5 | 50,0 | 30,0 | 116,0 | 65,5 | 0,32 | ● | 25106 |



SMS Svetskoppling
SMS Welded union




| Dim. mm | DN Inch. | Mutter Nut | Svetshylsa Welding liner | | Svetsnippel Welding male part | Packning Seal | | | Blindbricka Blanks |
|------------|-------------|----------------------|-----------------------------|----------------------|----------------------------------|----------------------|----------------------|----------------------|-----------------------|
| | | | Kort/Short | Lång/Long | | NBR | EPDM | Viton | |
| | | Varunr. Articleno | Varunr. Articleno | Varunr. Articleno | Varunr. Articleno | Varunr. Articleno | Varunr. Articleno | Varunr. Articleno | Varunr. Articleno |
| 25,0 | 1" | ● 27410 | ● 27395 | ● 27385 | ● 27401 | ● 27420 | ● 27500 | ● 32284 | ● 27450 |
| 38,0 | 1 1/2" | ● 27411 | ● 27396 | ● 27386 | ● 27402 | ● 27421 | ● 27501 | ● 32285 | ● 27451 |
| 51,0 | 2" | ● 27412 | ● 27397 | ● 27387 | ● 27403 | ● 27422 | ● 27502 | ● 32286 | ● 27452 |
| 63,5 | 2 1/2" | ● 27413 | ● 27398 | ● 27388 | ● 27404 | ● 27423 | ● 27503 | ● 32287 | ● 27453 |
| 76,1 | 3" | ● 27414 | ● 27399 | ● 27389 | ● 27405 | ● 27424 | ● 27504 | ● 32288 | ● 27454 |
| 101,6 | 4" | ● 27415 | ● 27400 | | ● 27406 | ● 27425 | ● 27505 | ● 32289 | ● 27455 |

DS/ISO Svetskoppling, Dansk standard
DS/ISO Welded union



| Dim. mm | DN Inch | Mutter Nut | Svetskrage Welding liner | Svetsnippel Welding male part | Packning Seal | | | Blindbricka Blanks | Lockmutter och kedja End cap w/ chain | |
|------------|------------|------------------------|-----------------------------|----------------------------------|------------------------|------------------------|------------------------|------------------------|--|------------------------|
| | | | | | NBR | EPDM | Viton | | Mutter/cap | Kedja/chain |
| | | Varunr. Article no. | Varunr. Article no. | Varunr. Article no. | Varunr. Article no. | Varunr. Article no. | Varunr. Article no. | Varunr. Article no. | Varunr. Article no. | Varunr. Article no. |
| 25,0 | 1" | ● 18355 | ● 18375 | ● 18365 | ● 18345 | ● 32551 | ● 32583 | ● 18406 | ● 32991 | ● 32999 |
| 38,0 | 1 1/2" | ● 18356 | ● 18376 | ● 18366 | ● 18346 | ● 32552 | ● 32584 | ● 18407 | ● 32992 | ● 33000 |
| 51,0 | 2" | ● 18357 | ● 18377 | ● 18367 | ● 18347 | ● 32553 | ● 32585 | ● 18408 | ● 32993 | ● 33001 |
| 63,5 | 2 1/2" | ● 18358 | ● 18378 | ● 18368 | ● 18348 | ● 32554 | ● 32586 | ● 18409 | ● 32994 | ● 33002 |
| 76,1 | 3" | ● 18359 | ● 18379 | ● 18369 | ● 18349 | ● 32555 | ● 32587 | ● 18410 | ● 32995 | ● 33003 |
| 101,6 | 4" | ● 18360 | ● 18380 | ● 18370 | ● 18350 | ● 32556 | ● 32588 | ● 18411 | | |

DS/ISO Valskoppling, Dansk standard
DS/ISO Expanding union



| Dim. mm | DN Inch | Mutter Nut | Valshylsa Expanding liner | Valsnippel Expanding male part | Packning Seal | | |
|------------|------------|------------------------|------------------------------|-----------------------------------|------------------------|------------------------|------------------------|
| | | | | | NBR | EPDM | Viton |
| | | Varunr. Article no. | Varunr. Article no. | Varunr. Article no. | Varunr. Article no. | Varunr. Article no. | Varunr. Article no. |
| 25,0 | 1" | ● 18355 | ● 18412 | ● 18418 | ● 18345 | ● 32551 | ● 32583 |
| 38,0 | 1 1/2" | ● 18356 | ● 18413 | ● 18419 | ● 18346 | ● 32552 | ● 32584 |
| 51,0 | 2" | ● 18357 | ● 18414 | ● 18420 | ● 18347 | ● 32553 | ● 32585 |
| 63,5 | 2 1/2" | ● 18358 | ● 18415 | ● 18421 | ● 18348 | ● 32554 | ● 32586 |
| 76,1 | 3" | ● 18359 | ● 18416 | ● 18422 | ● 18349 | ● 32555 | ● 32587 |
| 101,6 | 4" | ● 18360 | ● 18417 | ● 18423 | ● 18350 | ● 32556 | ● 32588 |

Se följande sidor med ritningar för mått / Please see the following pages for drawings and measures

DIN Svetskoppling
DIN Welded union



| Dim. mm | DN | Mutter Nut | Svetshylsa Welding liner | Svetsnippel Welding male part | NBR | Packning Seal EPDM | Viton |
|------------|-----|------------------------|-----------------------------|----------------------------------|------------------------|--------------------------|------------------------|
| | | Varunr. Article no. | Varunr. Article no. | Varunr. Article no. | Varunr. Article no. | Varunr. Article no. | Varunr. Article no. |
| 29,0 | 25 | ● 33302 | ● 33296 | ● 33290 | ● 33308 | ● 33314 | ● 33320 |
| 41,0 | 40 | ● 33303 | ● 33297 | ● 33291 | ● 33309 | ● 33315 | ● 33321 |
| 53,0 | 50 | ● 33304 | ● 33298 | ● 33292 | ● 33310 | ● 33316 | ● 33322 |
| 70,0 | 65 | ● 33305 | ● 33299 | ● 33293 | ● 33311 | ● 33317 | ● 33323 |
| 85,0 | 80 | ● 33306 | ● 33300 | ● 33294 | ● 33312 | ● 33318 | ● 33324 |
| 104,0 | 100 | ● 33307 | ● 33301 | ● 33295 | ● 33313 | ● 33319 | ● 33325 |

Se följande sidor med ritningar för mått / Please see the following pages for drawings and measures

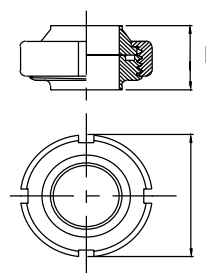
Svetskoppling N133, Dansk standard

DS Svetskoppling, komplett

DS Welding union, complete

Cert.: EN 10204/3.1

| Dim. mm | L mm | D mm | Kg/ st/pc | AISI | 316 |
|------------|---------|---------|--------------|------|------------------------|
| | | | | | Varunr. Article no. |
| 25,0 | 36,0 | 57,0 | 0,352 | | ● 25115 |
| 38,0 | 37,0 | 71,0 | 0,503 | | ● 25116 |
| 51,0 | 37,0 | 86,0 | 0,724 | | ● 25117 |
| 63,5 | 45,0 | 103,0 | 1,089 | | ● 25118 |
| 76,1 | 45,0 | 115,0 | 1,376 | | ● 25119 |
| 101,6 | 47,0 | 150,0 | 1,975 | | ● 25534 |



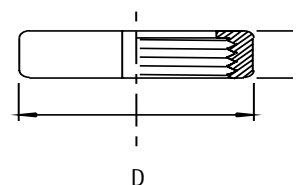
Mutter N133, Dansk standard

DS Kopplingsdel, mutter

DS Union parts, nut

Cert.: EN 10204/3.1

| Dim. mm | L mm | D mm | Kg/ st/pc | AISI | 304 |
|------------|---------|---------|--------------|------|------------------------|
| | | | | | Varunr. Article no. |
| 25,0 | 20,0 | 57,0 | 0,170 | | ● 18355 |
| 38,0 | 20,0 | 71,0 | 0,220 | | ● 18356 |
| 51,0 | 22,0 | 86,0 | 0,320 | | ● 18357 |
| 63,5 | 24,0 | 103,0 | 0,460 | | ● 18358 |
| 76,1 | 25,0 | 115,0 | 0,510 | | ● 18359 |
| 101,6 | 28,0 | 150,0 | 1,100 | | ● 18360 |



Lockmutter N133, Dansk standard

DS/ISO Lockmutter och kedja

DS/ISO End cap and chain

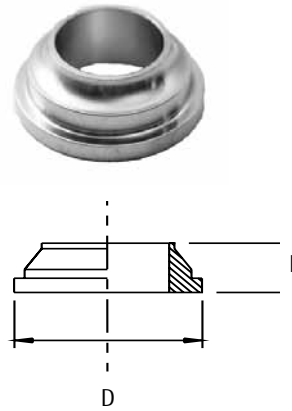
| Dim. mm | Kg/ st/pc | Lockmutter/End cap | Kedja/chain |
|------------|--------------|------------------------|------------------------|
| | | AISI 304 | AISI 304 |
| | | Varunr. Article no. | Varunr. Article no. |
| 25,0 | 0,200 | ● 32991 | ● 32999 |
| 38,0 | 0,300 | ● 32992 | ● 33000 |
| 51,0 | 0,450 | ● 32993 | ● 33001 |
| 63,5 | 0,634 | ● 32994 | ● 33002 |
| 76,1 | 0,900 | ● 32995 | ● 33003 |



Svetskrage N133, Dansk standard
DS Kopplingsdel, svetshylsa
DS Union parts, welding liner

Cert.: EN 10204/3.1

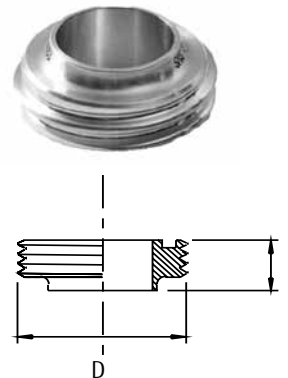
| Dim. mm | L mm | D mm | Kg/ st/pc | AISI | 316 | Varunr. Article no. |
|------------|---------|---------|--------------|------|-------|------------------------|
| 25,0 | 11,0 | 40,0 | 0,056 | ● | 18375 | |
| 38,0 | 11,0 | 54,0 | 0,085 | ● | 18376 | |
| 51,0 | 11,0 | 68,0 | 0,120 | ● | 18377 | |
| 63,5 | 12,0 | 84,0 | 0,200 | ● | 18378 | |
| 76,1 | 12,0 | 96,0 | 0,250 | ● | 18379 | |
| 101,6 | 12,0 | 124,0 | 0,510 | ● | 18380 | |



Svetsnippel N133, Dansk standard
DS Kopplingsdel, svetsnippel
DS Union parts, welding male part

Cert.: EN 10204/3.1

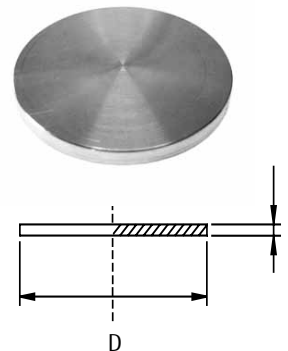
| Dim. mm | L mm | D mm | Kg/ st/pc | AISI | 316 | Varunr. Article no. |
|------------|---------|---------|--------------|------|-------|------------------------|
| 25,0 | 18,5 | 44,0 | 0,095 | ● | 18365 | |
| 38,0 | 20,0 | 58,0 | 0,140 | ● | 18366 | |
| 51,0 | 20,0 | 72,0 | 0,210 | ● | 18367 | |
| 63,5 | 24,0 | 88,0 | 0,350 | ● | 18368 | |
| 76,1 | 24,0 | 100,0 | 0,430 | ● | 18369 | |
| 101,6 | 24,0 | 130,0 | 0,780 | ● | 18370 | |



Blindbricka N133, Dansk standard
DS Kopplingsdel, blindbricka
DS Union parts, blanks

Cert.: EN 10204/3.1

| Dim. mm | L mm | D mm | Kg/ st/pc | AISI | 304 | Varunr. Article no. |
|------------|---------|---------|--------------|------|-------|------------------------|
| 25,0 | 3,0 | 40,0 | 0,030 | ● | 18406 | |
| 38,0 | 3,0 | 54,0 | 0,052 | ● | 18407 | |
| 51,0 | 3,0 | 68,0 | 0,084 | ● | 18408 | |
| 63,5 | 4,0 | 84,0 | 0,104 | ● | 18409 | |
| 76,1 | 4,0 | 96,0 | 0,230 | ● | 18410 | |
| 101,6 | 4,0 | 124,0 | 0,376 | ● | 18411 | |



Packning N133, Dansk standard

DS Kopplingsdel, packning

DS Union parts, seal

| Dim. mm | Kg/ st/pc | NBR | EPDM | Viton |
|------------|--------------|------------------------|------------------------|------------------------|
| | | Varunr. Article no. | Varunr. Article no. | Varunr. Article no. |
| 25,0 | 0,003 | ● 18345 | ● 32551 | ● 32583 |
| 38,0 | 0,004 | ● 18346 | ● 32552 | ● 32584 |
| 51,0 | 0,005 | ● 18347 | ● 32553 | ● 32585 |
| 63,5 | 0,008 | ● 18348 | ● 32554 | ● 32586 |
| 76,1 | 0,011 | ● 18349 | ● 32555 | ● 32587 |
| 101,6 | 0,013 | ● 18350 | ● 32556 | ● 32588 |



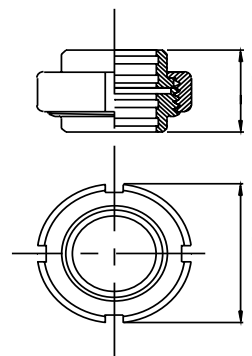
Valskoppling N133, Dansk standard

DS Valskoppling, komplett

DS Expanding union, complete

Cert.: EN 10204/3.1

| Dim. mm | L mm | D mm | Kg/ st/pc | AISI 304 |
|------------|---------|---------|--------------|------------------------|
| | | | | Varunr. Article no. |
| 25,0 | 36,5 | 57,0 | 0,352 | ● 25120 |
| 38,0 | 40,5 | 71,0 | 0,503 | ● 25121 |
| 51,0 | 44,5 | 86,0 | 0,724 | ● 25122 |
| 63,5 | 48,5 | 103,0 | 1,089 | ● 25123 |
| 76,1 | 52,5 | 115,0 | 1,376 | ● 25124 |



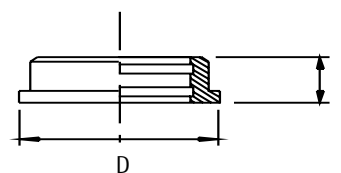
Valshylsa N133, Dansk standard

DS Kopplingsdel, valshylsa

DS Union parts, expanding liner

Cert.: EN 10204/3.1

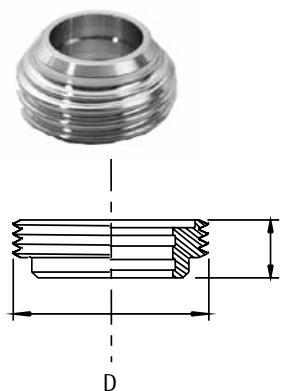
| Dim. mm | L mm | D mm | Kg/ st/pc | AISI 304 |
|------------|---------|---------|--------------|------------------------|
| | | | | Varunr. Article no. |
| 25,0 | 16,0 | 40,0 | 0,056 | ● 18412 |
| 38,0 | 18,0 | 54,0 | 0,090 | ● 18413 |
| 51,0 | 20,0 | 68,0 | 0,148 | ● 18414 |
| 63,5 | 22,0 | 84,0 | 0,232 | ● 18415 |
| 76,1 | 24,0 | 96,0 | 0,284 | ● 18416 |
| 101,6 | 29,0 | 123,0 | 0,530 | ● 18417 |



Valsnippel N133, Dansk standard
DS Kopplingsdel, valsnippel
DS Union parts, expanding male part

Cert.: EN 10204/3.1

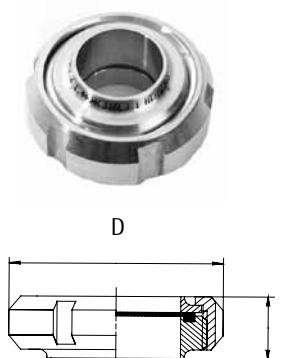
| Dim. mm | L mm | D mm | Kg/ st/pc | AISI 304 | Varunr. Article no. |
|------------|---------|---------|--------------|----------|------------------------|
| 25,0 | 20,0 | 44,0 | 0,100 | ● | 18418 |
| 38,0 | 22,0 | 58,0 | 0,156 | ● | 18419 |
| 51,0 | 24,0 | 72,0 | 0,240 | ● | 18420 |
| 63,5 | 26,0 | 88,0 | 0,364 | ● | 18421 |
| 76,1 | 28,0 | 100,0 | 0,438 | ● | 18422 |
| 101,6 | 34,0 | 130,0 | 0,810 | ● | 18423 |



Svetskoppling N135
SMS Svetskoppling, komplett
SMS Welding union, complete

Cert.: EN 10204/3.1

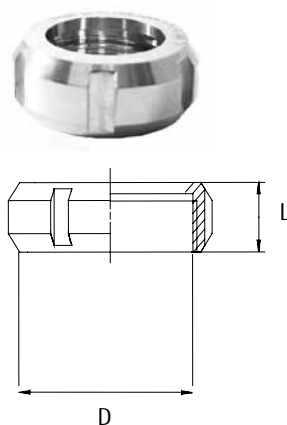
| Dim. mm | L mm | D mm | Kg/ st/pc | AISI 304 AISI 316L | Varunr. Article no. |
|------------|---------|---------|--------------|-----------------------|------------------------|
| 25,0 | 23,5 | 51,0 | 0,229 | ● | 813000 |
| 38,0 | 30,0 | 74,0 | 0,601 | ● | 813000 |
| 51,0 | 30,0 | 84,0 | 0,674 | ● | 813000 |
| 63,5 | 33,0 | 100,0 | 1,087 | ● | 813000 |
| 76,1 | 35,0 | 114,0 | 1,387 | ● | 813000 |
| 101,6 | 48,0 | 154,0 | 3,873 | ● | 813000 |



Mutter N135
SMS Kopplingsdel, mutter
SMS Union parts, nut

Cert.: EN 10204/3.1

| Dim. mm | L mm | D mm | Kg/ st/pc | AISI 304 | Varunr. Article no. |
|------------|---------|---------|--------------|----------|------------------------|
| 25,0 | 20,0 | 51,0 | 0,115 | ● | 27410 |
| 38,0 | 25,0 | 74,0 | 0,257 | ● | 27411 |
| 51,0 | 26,0 | 84,0 | 0,280 | ● | 27412 |
| 63,5 | 30,0 | 100,0 | 0,430 | ● | 27413 |
| 76,1 | 32,0 | 114,0 | 0,585 | ● | 27414 |
| 101,6 | 45,0 | 154,0 | 1,650 | ● | 27415 |



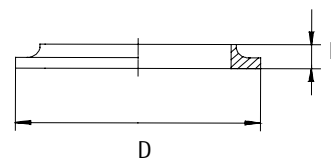
Svetshylsa N135

SMS Kopplingsdel, svetshylsa, kort

SMS Union parts, welding liner, short

Cert.: EN 10204/3.1

| Dim. mm | L mm | D mm | Kg/ st/pc | AISI 316 | Varunr. Article no. |
|------------|---------|---------|--------------|----------|------------------------|
| 25,0 | 7,5 | 35,5 | 0,030 | | ● 27395 |
| 38,0 | 9,0 | 55,0 | 0,040 | | ● 27396 |
| 51,0 | 9,0 | 65,0 | 0,060 | | ● 27397 |
| 63,5 | 9,0 | 80,0 | 0,100 | | ● 27398 |
| 76,1 | 10,0 | 93,0 | 0,130 | | ● 27399 |
| 101,6 | 12,0 | 127,0 | 0,280 | | ● 27400 |



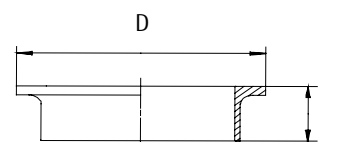
Svetshylsa N135

SMS Kopplingsdel, svetshylsa, lång

SMS Union parts, welding liner, long

Cert.: EN 10204/3.1

| Dim. mm | L mm | D mm | Kg/ st/pc | AISI 316 | Varunr. Article no. |
|------------|---------|---------|--------------|----------|------------------------|
| 25,0 | 17,0 | 35,5 | 0,031 | | ● 27385 |
| 38,0 | 20,0 | 55,0 | 0,076 | | ● 27386 |
| 51,0 | 20,0 | 65,0 | 0,086 | | ● 27387 |
| 63,5 | 25,0 | 80,0 | 0,153 | | ● 27388 |
| 76,1 | 30,0 | 93,0 | 0,220 | | ● 27389 |
| 101,6 | 35,0 | 127,0 | 0,420 | | ● 813000 |



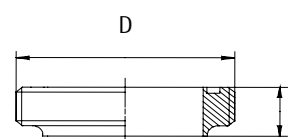
Svetsnippel N135

SMS Kopplingsdel, svetsnippel

SMS Union parts, welding male part

Cert.: EN 10204/3.1

| Dim. mm | L mm | D mm | Kg/ st/pc | AISI 316 | Varunr. Article no. |
|------------|---------|---------|--------------|----------|------------------------|
| 25,0 | 18,5 | 40,0 | 0,060 | | ● 27401 |
| 38,0 | 20,0 | 60,0 | 0,160 | | ● 27402 |
| 51,0 | 20,0 | 70,0 | 0,180 | | ● 27403 |
| 63,5 | 24,0 | 85,0 | 0,340 | | ● 27404 |
| 76,1 | 24,0 | 98,0 | 0,450 | | ● 27405 |
| 101,6 | 35,0 | 132,0 | 1,320 | | ● 27406 |



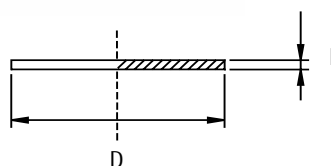
Blindbricka N135

SMS Kopplingsdel, blindbricka

SMS Union parts, blanks

Cert.: EN 10204/3.1

| Dim. mm | L mm | D mm | Kg/ st/pc | AISI 316 | Varunr. Article no. |
|------------|---------|---------|--------------|----------|------------------------|
| 25,0 | 3,0 | 35,5 | 0,024 | ● | 27450 |
| 38,0 | 4,0 | 55,0 | 0,074 | ● | 27451 |
| 51,0 | 4,0 | 65,0 | 0,104 | ● | 27452 |
| 63,5 | 4,0 | 80,0 | 0,158 | ● | 27453 |
| 76,1 | 5,0 | 93,0 | 0,266 | ● | 27454 |
| 101,6 | 6,0 | 127,0 | 0,594 | ● | 27455 |



Packning N135

SMS Kopplingsdel, packning

SMS Union parts, seal

| Dim. mm | Kg/ st/pc | NBR | EPDM | Viton |
|------------|--------------|------------------------|------------------------|------------------------|
| | | Varunr. Article no. | Varunr. Article no. | Varunr. Article no. |
| 25,0 | 0,003 | ● 27420 | ● 27500 | ● 32284 |
| 38,0 | 0,004 | ● 27421 | ● 27501 | ● 32285 |
| 51,0 | 0,005 | ● 27422 | ● 27502 | ● 32286 |
| 63,5 | 0,008 | ● 27423 | ● 27503 | ● 32287 |
| 76,1 | 0,011 | ● 27424 | ● 27504 | ● 32288 |
| 101,6 | 0,013 | ● 27425 | ● 27505 | ● 32289 |



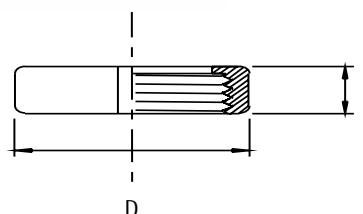
Mutter N133

DIN Kopplingsdel, mutter

DIN Union parts, nut

Cert.: EN 10204/3.1

| Dim. mm | DN | L mm | D mm | Kg/ st/pc | AISI 304 | Varunr. Article no. |
|------------|-----|---------|---------|--------------|----------|------------------------|
| 29,0 | 25 | 21,0 | 52,0 | 0,178 | ● | 33302 |
| 41,0 | 40 | 21,0 | 65,0 | 0,245 | ● | 33303 |
| 53,0 | 50 | 21,0 | 78,0 | 0,245 | ● | 33304 |
| 70,0 | 65 | 25,0 | 95,0 | 0,560 | ● | 33305 |
| 85,0 | 80 | 29,0 | 110,0 | 0,746 | ● | 33306 |
| 104,0 | 100 | 31,0 | 130,0 | 1,008 | ● | 33307 |



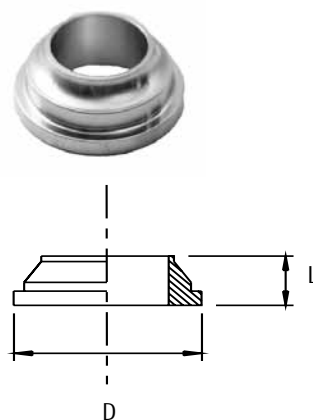
Svetskrage N133

DIN Kopplingsdel, svetshylsa

DIN Union parts, welding liner

Cert.: EN 10204/3.1

| Dim. mm | DN | L mm | D mm | Kg/ st/pc | AISI 316 | Varunr. Article no. |
|------------|-------|---------|---------|--------------|----------|------------------------|
| 29,0 | 25,0 | 22,0 | 44,0 | 0,089 | ● | 33296 |
| 41,0 | 40,0 | 26,0 | 56,0 | 0,134 | ● | 33297 |
| 53,0 | 50,0 | 28,0 | 68,5 | 0,198 | ● | 33298 |
| 70,0 | 65,0 | 32,0 | 86,0 | 0,313 | ● | 33299 |
| 85,0 | 80,0 | 37,0 | 100,0 | 0,394 | ● | 33300 |
| 104,0 | 104,0 | 44,0 | 121,0 | 0,602 | ● | 33301 |



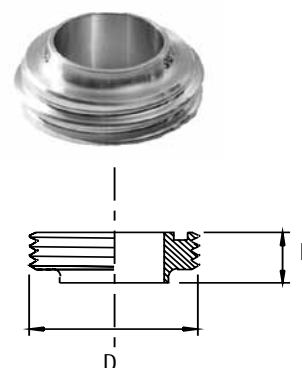
Svetsnippel N133

DIN Kopplingsdel, svetsnippel

DIN Union parts, welding male part

Cert.: EN 10204/3.1

| Dim. mm | DN | L mm | D mm | Kg/ st/pc | AISI 316 | Varunr. Article no. |
|------------|-------|---------|---------|--------------|----------|------------------------|
| 29,0 | 25,0 | 29,0 | 52,0 | 0,108 | ● | 33290 |
| 41,0 | 40,0 | 33,0 | 65,0 | 0,173 | ● | 33291 |
| 53,0 | 50,0 | 35,0 | 78,0 | 0,230 | ● | 33292 |
| 70,0 | 65,0 | 40,0 | 95,0 | 0,336 | ● | 33293 |
| 85,0 | 80,0 | 45,0 | 110,0 | 0,524 | ● | 33294 |
| 104,0 | 104,0 | 54,0 | 130,0 | 0,718 | ● | 33295 |



Packning N133

DIN Kopplingsdel, packning

DIN Union parts, seal

| Dim. mm | DN | Kg/ st/pc | NBR | EPDM | Viton |
|------------|-------|--------------|------------------------|------------------------|------------------------|
| | | | Varunr. Article no. | Varunr. Article no. | Varunr. Article no. |
| 29,0 | 25,0 | 0,005 | ● 33308 | ● 33314 | ● 33320 |
| 41,0 | 40,0 | 0,005 | ● 33309 | ● 33315 | ● 33321 |
| 53,0 | 50,0 | 0,006 | ● 33310 | ● 33316 | ● 33322 |
| 70,0 | 65,0 | 0,007 | ● 33311 | ● 33317 | ● 33323 |
| 85,0 | 80,0 | 0,009 | ● 33312 | ● 33318 | ● 33324 |
| 104,0 | 104,0 | 0,010 | ● 33313 | ● 33319 | ● 33325 |



Clampkopplingar översikt

Clamp survey

SMS/DS/ISO

Clamp

SMS/DS/ISO

Clamp



| Dim. mm | DN Inch | Clampring med vingmutter Wingnut clamp Kraftig/Heavy duty | | Svetshylsa Clamp ferrule | | Packning Seal | | | Blindbricka Clamp blank |
|------------|------------|---|------------------------|-----------------------------|------------------------|------------------|---------|---------|----------------------------|
| | | Varunr. Article no. | Varunr. Article no. | Varunr. Article no. | Varunr. Article no. | NBR | EPDM | Viton | |
| 25,0 | 1" | ● 18315 | ● 32625 | ● 18325 | ● 18335 | ● 32557 | ● 32577 | ● 18400 | |
| 38,0 | 1 1/2" | ● 18316 | ● 32627 | ● 18326 | ● 18336 | ● 32558 | ● 32578 | ● 18401 | |
| 51,0 | 2" | ● 18317 | ● 32629 | ● 18327 | ● 18337 | ● 32559 | ● 32579 | ● 18402 | |
| 63,5 | 2 1/2" | ● 18318 | ● 32631 | ● 18328 | ● 18338 | ● 32560 | ● 32580 | ● 18403 | |
| 76,1 | 3" | ● 18319 | ● 32633 | ● 18329 | ● 18339 | ● 32561 | ● 32581 | ● 18404 | |
| 101,6 | 4" | ● 18320 | ● 32635 | ● 18330 | ● 18340 | ● 32562 | ● 32582 | ● 18405 | |
| 168,3 | | | ● 32766 | | | | | | |

DIN Clamp

DIN Clamp



| Dim. mm | DN | Clampring med vingmutter Wingnut clamp | Svetshylsa Clamp ferrule | Packning Seal | | | | Blindbricka Clamp blank |
|------------|-----|---|-----------------------------|------------------------|------------------------|------------------------|------------------------|----------------------------|
| | | | | NBR | EPDM | Viton | Teflon | |
| | | Varunr. Article no. | Varunr. Article no. | Varunr. Article no. | Varunr. Article no. | Varunr. Article no. | Varunr. Article no. | Varunr. Article no. |
| 13,0 | 10 | ● 32622 | ● 32642 | ● 32670 | ● 32684 | ▶ 32698 | ● 32712 | ▶ 32656 |
| 19,0 | 15 | ▶ 32623 | ● 32643 | ● 32671 | ● 32685 | ● 32699 | ▶ 32713 | ▶ 32657 |
| 23,0 | 20 | ▶ 32624 | ● 32644 | ▶ 32672 | ● 32686 | ● 32670 | ▶ 32714 | ● 32658 |
| 29,0 | 25 | ● 32626 | ● 32645 | ● 32673 | ● 32687 | ● 32701 | ● 32715 | ● 32659 |
| 41,0 | 40 | ● 32628 | ● 32646 | ● 32674 | ● 32688 | ● 32702 | ● 32716 | ● 32660 |
| 53,0 | 50 | ● 32630 | ● 32647 | ● 32675 | ● 32689 | ● 32703 | ● 32717 | ● 32661 |
| 70,0 | 65 | ● 32632 | ● 32648 | ● 32676 | ● 32690 | ● 32704 | ● 32718 | ● 32662 |
| 85,0 | 80 | ● 32634 | ● 32649 | ● 32677 | ● 32691 | ● 32705 | ● 32719 | ● 32663 |
| 104,0 | 100 | ● 32636 | ● 32650 | ● 32678 | ● 32692 | ● 32706 | ● 32720 | ● 32664 |
| 129,0 | 125 | ● 32637 | ● 32651 | ● 32679 | ● 32693 | ● 32707 | ● 32721 | ● 32665 |
| 154,0 | 150 | ● 32638 | ● 32652 | ● 32680 | ● 32694 | ● 32708 | ● 32722 | ● 32666 |
| 204,0 | 200 | ● 32639 | ● 32653 | ● 32681 | ▶ 32695 | ▶ 32709 | ▶ 32723 | ● 32667 |
| 254,0 | 250 | ▶ 32640 | ▶ 32654 | ● 32682 | ▶ 32696 | ▶ 32710 | ▶ 32724 | ▶ 32668 |
| 304,0 | 300 | ▶ 32641 | ● 32655 | ● 32683 | ▶ 32697 | ▶ 32711 | ▶ 32725 | ● 32669 |

Se följande sidor med ritningar för mått / Please see the following pages for drawings and measures

DIN Miniclamp
DIN Miniclamp



| Dim. mm | Clampring med vingmutter Wingnut clamp | Svetshylsa Clamp ferrule | Packning Seal | | | Blindbricka Clamp blank |
|------------|---|-----------------------------|------------------------|------------------------|------------------------|----------------------------|
| | | | EPDM | Viton | Teflon | |
| | Varunr. Article no. | Varunr. Article no. | Varunr. Article no. | Varunr. Article no. | Varunr. Article no. | Varunr. Article no. |
| 6,0 | ● 32726 | ● 32727 | ● 32736 | ▶ 32744 | ● 32751 | ▶ 32735 |
| 8,0 | ● 32726 | ● 32728 | ● 32737 | ▶ 32745 | ● 32752 | ▶ 32735 |
| 10,0 | ● 32726 | ● 32729 | ● 32738 | ▶ 32746 | ● 32753 | ▶ 32735 |
| 12,0 | ● 32726 | ● 32730 | ● 32739 | ● 32747 | ● 32754 | ▶ 32735 |
| 14,0 | ● 32726 | ● 32731 | ● 32740 | ▶ 32748 | ▶ 32755 | ▶ 32735 |
| 16,0 | ● 32726 | ● 32732 | ● 32741 | ● 32749 | ▶ 32756 | ▶ 32735 |
| 18,0 | ● 32726 | ● 32733 | ● 32742 | ● 32750 | ● 32757 | ▶ 32735 |
| 19,0 | ● 32726 | ● 32733 | ● 32743 | ● 32751 | ▶ 32758 | ▶ 32735 |

Se följande sidor med ritningar för mått / Please see the following pages for drawings and measures

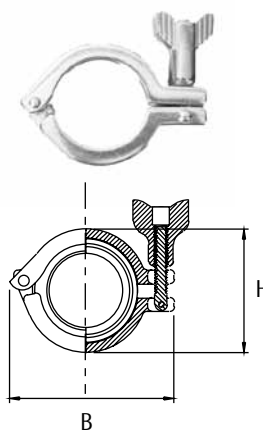
Clampring med vingmutter N136

SMS/DS/ISO Clampring med vingmutter

SMS/DS/ISO Wingnut clamp with milled nut

Cert.: EN 10204/3.1

| Dim. mm | B mm | H mm | Kg/ st/pc | AISI 304 | Varunr. Article no. |
|------------|---------|---------|--------------|----------|------------------------|
| 25,0 | 88,9 | 63,5 | 0,296 | ● | 18315 |
| 38,0 | 88,9 | 63,5 | 0,296 | ● | 18316 |
| 51,0 | 101,6 | 76,2 | 0,352 | ● | 18317 |
| 63,5 | 114,3 | 88,9 | 0,390 | ● | 18318 |
| 76,1 | 127,0 | 101,6 | 0,432 | ● | 18319 |
| 101,6 | 160,0 | 132,0 | 0,554 | ● | 18320 |



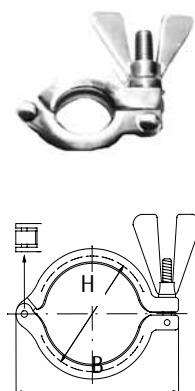
Clampring med vingmutter N136

SMS/DS/ISO Clampring med vingmutter, kraftig model, V-Type,

SMS/DS/ISO Wingnut clamp with milled nut, heavy duty, V-hedged

Cert.: EN 10204/3.1

| Dim. mm | ISO mm | B mm | H mm | Kg/ st/pc | AISI 304 | Varunr. Article no. |
|------------|-----------|---------|---------|--------------|----------|------------------------|
| 25,0 | 25,0 | 85,0 | 50,0 | 0,211 | ● | 32625 |
| 38,0 | 38,0 | 85,0 | 50,0 | 0,211 | ● | 32627 |
| 51,0 | 51,0 | 99,0 | 64,0 | 0,303 | ● | 32629 |
| 63,5 | 63,5 | 112,0 | 77,0 | 0,342 | ● | 32631 |
| 76,1 | 76,1 | 126,0 | 91,0 | 0,396 | ● | 32633 |
| 101,6 | 101,6 | 154,0 | 119,0 | 0,534 | ● | 32635 |
| 168,3 | 168,3 | 255,0 | 187,0 | 1,590 | ● | 32766 |



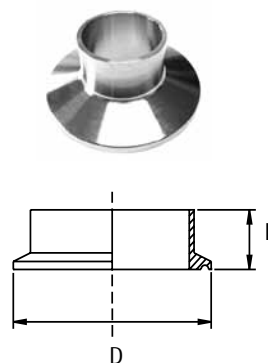
Clamphylsa N136

SMS/DS/ISO Clamp svetshylsa

SMS/DS/ISO Clamp ferrule

Cert.: EN 10204/3.1

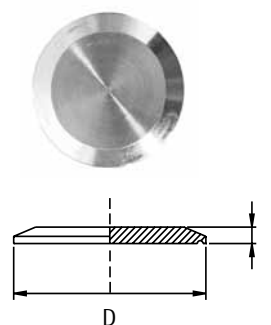
| Utv./Outside dim. mm | Inv./Inside dim mm | L mm | D mm | Kg/ st/pc | AISI 316L | Varunr. Article no. |
|-------------------------|-----------------------|---------|---------|--------------|-----------|------------------------|
| 25,0 | 22,6 | 21,5 | 50,5 | 0,068 | ● | 18325 |
| 38,0 | 35,6 | 21,5 | 50,5 | 0,068 | ● | 18326 |
| 51,0 | 48,6 | 21,5 | 64,0 | 0,052 | ● | 18327 |
| 63,5 | 60,3 | 21,5 | 77,5 | 0,070 | ● | 18328 |
| 76,1 | 72,9 | 21,5 | 91,0 | 0,106 | ● | 18329 |
| 101,6 | 97,6 | 21,5 | 119,0 | 0,128 | ● | 18330 |



Clampblindbricka N136
SMS/DS/ISO Clampblindbricka
SMS/DS/ISO Clamp blank

Cert.: EN 10204/3.1

| Dim. mm | L mm | D mm | Kg/ st/pc | AISI 316L | Varunr. Article no. |
|------------|---------|---------|--------------|-----------|------------------------|
| 25,0 | 6,4 | 50,4 | 0,078 | | ● 18400 |
| 38,0 | 6,4 | 50,4 | 0,078 | | ● 18401 |
| 51,0 | 6,4 | 63,9 | 0,134 | | ● 18402 |
| 63,5 | 6,4 | 77,4 | 0,200 | | ● 18403 |
| 76,1 | 6,4 | 90,9 | 0,288 | | ● 18404 |
| 101,6 | 6,4 | 118,9 | 0,510 | | ● 18405 |



Clamppackning N136
SMS/DS/ISO Clamppackning
SMS/DS/ISO Clamp seal

| Dim. mm | Kg/ st/pc | NBR | EPDM | Viton |
|------------|--------------|------------------------|------------------------|------------------------|
| | | Varunr. Article no. | Varunr. Article no. | Varunr. Article no. |
| 25,0 | 0,008 | ● 18335 | ● 32557 | ● 32577 |
| 38,0 | 0,008 | ● 18336 | ● 32558 | ● 32578 |
| 51,0 | 0,008 | ● 18337 | ● 32559 | ● 32579 |
| 63,5 | 0,008 | ● 18338 | ● 32560 | ● 32580 |
| 76,1 | 0,012 | ● 18339 | ● 32561 | ● 32581 |
| 101,6 | 0,016 | ● 18340 | ● 32562 | ● 32582 |



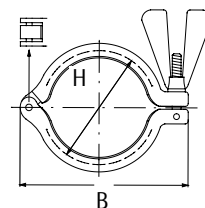
Clampring med vingmutter N138

DIN Clampring med vingmutter, kraftig model, V-Type

DIN Wingnut clamp with milled nut, heavy duty, V-hedged

Cert.: EN 10204/3.1

| Dim. mm | DIN DN | B mm | H mm | AISI 304 | Varunr. Article no. |
|------------|-----------|---------|---------|----------|------------------------|
| 13,0 | 10 | 69,0 | 34,0 | ● | 32622 |
| 19,0 | 15 | 69,0 | 34,0 | ▶ | 32623 |
| 23,0 | 20 | 69,0 | 34,0 | ▶ | 32624 |
| 29,0 | 25 | 85,0 | 50,0 | ● | 32626 |
| 41,0 | 40 | 85,0 | 50,0 | ● | 32628 |
| 53,0 | 50 | 99,0 | 64,0 | ● | 32630 |
| 70,0 | 65 | 126,0 | 91,0 | ● | 32632 |
| 85,0 | 80 | 140,0 | 106,0 | ● | 32634 |
| 104,0 | 100 | 154,0 | 119,0 | ● | 32636 |
| 129,0 | 125 | 194,0 | 147,0 | ● | 32637 |
| 154,0 | 150 | 230,0 | 170,0 | ● | 32638 |
| 204,0 | 200 | 289,0 | 221,0 | ● | 32639 |
| 254,0 | 250 | 357,0 | 268,0 | ▶ | 32640 |
| 304,0 | 300 | 430,0 | 319,0 | ▶ | 32641 |



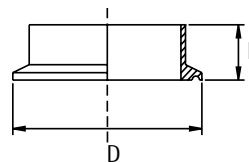
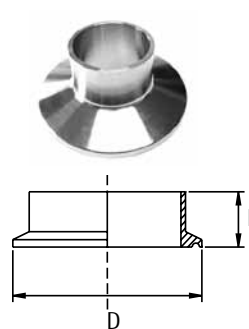
Clamp svetshylsa N138

DIN Clamp svetshylsa

DIN Clamp ferrule

Cert.: EN 10204/3.1

| Dim. mm | DIN DN | L mm | D mm | AISI 316L | Varunr. Article no. |
|------------|-----------|---------|---------|-----------|------------------------|
| 13,0 | 10 | 18,0 | 34,0 | ● | 32642 |
| 19,0 | 15 | 18,0 | 34,0 | ● | 32643 |
| 23,0 | 20 | 18,0 | 34,0 | ● | 32644 |
| 29,0 | 25 | 21,5 | 50,5 | ● | 32645 |
| 41,0 | 40 | 21,5 | 50,5 | ● | 32646 |
| 53,0 | 50 | 21,5 | 64,0 | ● | 32647 |
| 70,0 | 65 | 28,0 | 91,0 | ● | 32648 |
| 85,0 | 80 | 28,0 | 106,0 | ● | 32649 |
| 104,0 | 100 | 28,0 | 119,0 | ● | 32650 |
| 129,0 | 125 | 28,0 | 144,0 | ● | 32651 |
| 154,0 | 150 | 28,0 | 167,0 | ● | 32652 |
| 204,0 | 200 | 28,0 | 218,0 | ● | 32653 |
| 254,0 | 250 | 28,0 | 268,0 | ▶ | 32654 |
| 304,0 | 300 | 28,0 | 319,0 | ● | 32655 |



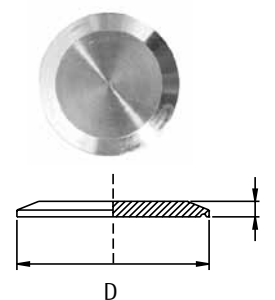
Clampblindbricka N138

DIN Clampblindbricka

DIN Clamp blank

Cert.: EN 10204/3.1

| Dim. mm | DIN DN | L mm | D mm | AISI 316L Varunr. Article no. |
|------------|-----------|---------|---------|-------------------------------------|
| 13,0 | 10 | 6,0 | 34,0 | ▶ 32656 |
| 19,0 | 15 | 6,0 | 34,0 | ▶ 32657 |
| 23,0 | 20 | 6,0 | 34,0 | ● 32658 |
| 29,0 | 25 | 7,0 | 50,5 | ● 32659 |
| 41,0 | 40 | 7,0 | 50,5 | ● 32660 |
| 53,0 | 50 | 7,0 | 64,0 | ● 32661 |
| 70,0 | 65 | 7,0 | 91,0 | ● 32662 |
| 85,0 | 80 | 7,0 | 106,0 | ● 32663 |
| 104,0 | 100 | 9,0 | 119,0 | ● 32664 |
| 129,0 | 125 | 10,0 | 144,4 | ● 32665 |
| 154,0 | 150 | 10,0 | 167,0 | ● 32666 |
| 204,0 | 200 | 10,0 | 217,4 | ● 32667 |
| 254,0 | 250 | 10,0 | 268,0 | ▶ 32668 |
| 304,0 | 300 | 10,0 | 319,0 | ● 32669 |



Clamppackning N138

DIN Clamppackning

DIN Clamp seal

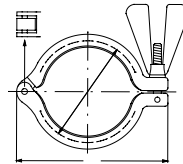
| Dim. mm | DIN | NBR | EPDM | VITON | TEFLON |
|------------|-----|------------------------|------------------------|------------------------|------------------------|
| | | Varunr. Article no. | Varunr. Article no. | Varunr. Article no. | Varunr. Article no. |
| 13,0 | 10 | ● 32670 | ● 32684 | ▶ 32698 | ● 32712 |
| 19,0 | 10 | ● 32671 | ● 32685 | ● 32699 | ▶ 32713 |
| 23,0 | 10 | ▶ 32672 | ● 32686 | ● 32700 | ▶ 32714 |
| 29,0 | 10 | ● 32673 | ● 32687 | ● 32701 | ● 32715 |
| 41,0 | 10 | ● 32674 | ● 32688 | ● 32702 | ● 32716 |
| 53,0 | 10 | ● 32675 | ● 32689 | ● 32703 | ● 32717 |
| 70,0 | 10 | ● 32676 | ● 32690 | ● 32704 | ● 32718 |
| 85,0 | 10 | ● 32677 | ● 32691 | ● 32705 | ● 32719 |
| 104,0 | 10 | ● 32678 | ● 32692 | ● 32706 | ● 32720 |
| 129,0 | 10 | ● 32679 | ● 32693 | ● 32707 | ▶ 32721 |
| 154,0 | 10 | ● 32680 | ● 32694 | ● 32708 | ▶ 32722 |
| 204,0 | 10 | ▶ 32681 | ● 32695 | ▶ 32709 | ▶ 32723 |
| 254,0 | 10 | ▶ 32682 | ● 32696 | ▶ 32710 | ▶ 32724 |
| 304,0 | 10 | ▶ 32683 | ● 32697 | ▶ 32711 | ▶ 32725 |



Mini clampring med vingmutter N 139:
Mini clampring med vingmutter, kraftig model
Mini clamp ring, heavy type

Cert.: EN 10204/3.1

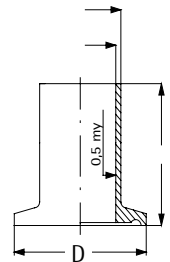
| Dim. mm | D mm | AISI 304 |
|---------------|---------|-----------------------------------|
| 6,0 - 19,0 mm | 25,4 | Varunr. Article no. ● 32726 |



Mini clampkrage N139
Mini clampkrage
Mini clamp ferrule

Cert.: EN 10204/3.1

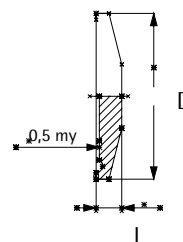
| Dim. mm | L mm | D mm | AISI 316L |
|------------|---------|---------|-----------------------------------|
| 6,0 | 21,5 | 25,4 | Varunr. Article no. ● 32727 |
| 8,0 | 21,5 | 25,4 | ● 32728 |
| 10,0 | 21,5 | 25,4 | ● 32729 |
| 12,0 | 21,5 | 25,4 | ● 32730 |
| 14,0 | 21,5 | 25,4 | ● 32731 |
| 16,0 | 21,5 | 25,4 | ● 32732 |
| 18,0 | 21,5 | 25,4 | ● 32733 |
| 19,0 | 21,5 | 25,4 | ● 32734 |



Mini clampblindbricka N139
Mini clampblindbricka
Mini clamp blank

Cert.: EN 10204/3.1

| Dim. mm | L mm | D mm | AISI 316L |
|---------------|---------|---------|-----------------------------------|
| 6,0 - 19,0 mm | 5,6 | 25,3 | Varunr. Article no. ▶ 32735 |



Mini clamppacking N139

Mini clamppacking

Mini clamp seal

| Dim. mm | EPDM | Viton | TEFLON |
|------------|------------------------|------------------------|------------------------|
| | Varunr. Article no. | Varunr. Article no. | Varunr. Article no. |
| 6,0 | ● 32736 | ▶ 32744 | ● 32751 |
| 8,0 | ● 32737 | ▶ 32745 | ● 32752 |
| 10,0 | ● 32738 | ▶ 32746 | ● 32753 |
| 12,0 | ● 32739 | ● 32747 | ● 32754 |
| 14,0 | ● 32740 | ▶ 32748 | ▶ 32755 |
| 16,0 | ● 32741 | ● 32749 | ▶ 32756 |
| 18,0 | ● 32742 | ● 32750 | ● 32757 |
| 19,0 | ● 32743 | ● 32751 | ● 32758 |



Kopplingsnyckel N137

Kopplingsnyckel, universal

Spanner, universal

| Dim. mm | A mm | Kg/ st/pc | Varunr. Article no. |
|------------|---------|--------------|------------------------|
| | | | 25,0 - 76,0 |
| 101,6 | | 0,986 | ▶ 18501 |



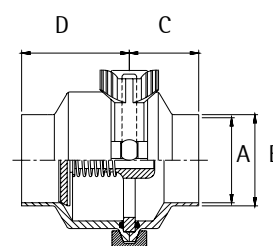
Backventil N160

SMS/DS 3A-backventil med clamp och svetsändar

SMS/DS 3A-check valve, middle clamp and welding end

Cert.: EN 10204/3.1

| Dim. mm | Kg/ stk./pc | A mm | B mm | C mm | D mm | 316 |
|------------|----------------|---------|---------|---------|---------|------------------------|
| | | | | | | Varunr. Article no. |
| 25,0 | 1,25 | 22,6 | 25,0 | 38,0 | 59,0 | ● 32598 |
| 38,0 | 1,62 | 35,6 | 38,0 | 38,0 | 59,0 | ● 32599 |
| 51,0 | 1,93 | 48,6 | 51,0 | 38,0 | 59,0 | ● 32600 |
| 63,5 | 2,56 | 60,5 | 63,5 | 38,0 | 59,0 | ● 32601 |
| 76,1 | 2,96 | 72,1 | 76,1 | 38,0 | 59,0 | ● 32602 |
| 101,6 | 5,45 | 97,6 | 101,6 | 38,0 | 59,0 | ● 32603 |



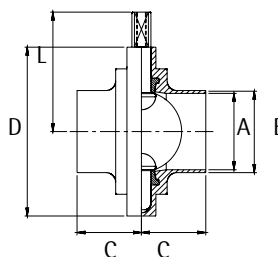
Skivventil N160

SMS/DS Skivventil, med svetsändar, EPDM packning, utan handtag
SMS/DS Butterfly valve, with welding end, EPDM seal, without handle

Cert.: EN 10204/3.1

| Dim. mm | Kg/ st/pc | A mm | B mm | C mm | D mm | L mm | AISI 316L |
|------------|--------------|---------|---------|---------|---------|---------|--------------|
| 25,0 | 0,99 | 22,6 | 25,0 | 34,0 | 79,0 | 61,0 | ● 32592 |
| 38,0 | 1,19 | 35,6 | 38,0 | 38,0 | 85,0 | 64,3 | ● 32593 |
| 51,0 | 1,51 | 48,6 | 51,0 | 40,0 | 105,0 | 74,3 | ● 32594 |
| 63,5 | 1,79 | 60,5 | 63,5 | 40,0 | 112,0 | 77,6 | ● 32595 |
| 76,1 | 2,41 | 72,1 | 76,1 | 41,0 | 125,0 | 84,8 | ● 32596 |
| 101,6 | 2,59 | 97,6 | 101,6 | 44,0 | 157,0 | 101,6 | ● 32597 |

Varunr.
Article no.



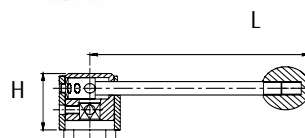
Handtag N160

Handtag till skivventiler, 4 positioner
Pull handle for butterfly valve, 4 positions

| Dim. mm | Kg/ st/pcmm | L mm | H | AISI 304 |
|-------------|----------------|---------|------|-------------|
| 25,0 - 76,1 | 0,41 | 135,0 | 42,0 | ● 32610 |
| 101,6 | 0,41 | 165,0 | 42,0 | ● 32615 |

Varunr.

Article no.

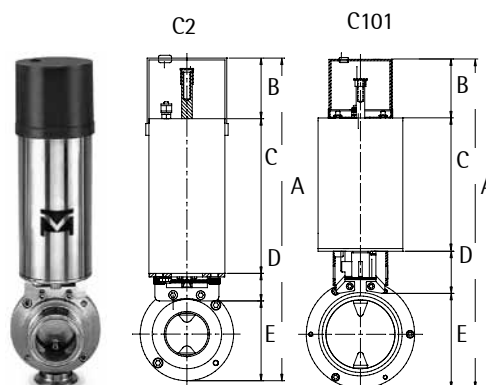


Aktuator N160

Manöverdon utan kontrollbox, exkl. skivventil
Actuator for butterfly valve, without control box, excl. butterfly valve

| Dim. mm | Kg/ st/pc | Type | A mm | B mm | C mm | D mm | E mm |
|------------|--------------|------|---------|---------|---------|---------|---------|
| 25,0 | 3,85 | C2 | 166,0 | 69,5 | 174,0 | 31,0 | 65,4 |
| 38,0 | 3,85 | C2 | 173,0 | 69,5 | 174,0 | 31,0 | 72,5 |
| 51,0 | 3,85 | C2 | 192,0 | 69,5 | 174,0 | 31,0 | 91,5 |
| 63,0 | 3,85 | C2 | 199,0 | 69,5 | 174,0 | 31,0 | 98,5 |
| 76,1 | 3,85 | C2 | 212,0 | 69,5 | 174,0 | 31,0 | 111,5 |
| 101,6 | 4,70 | C101 | 290,0 | 82,0 | 190,0 | 64,0 | 143,5 |

Varunr.
Article no.



Material / Material:

C2
AISI 304

C101
AISI 304

Packning / Seal:

Teflon

Teflon

Stängningstid / Closing time:

1,5 sek.

1,7 sek.

Lufttryck / Air pressure:

5-9 bar

5-9 bar

Luftförbrukning vid 5 bar / Air consumption at 5 bar:

0,266 l

0,550 l

Aseptiskt rör

DIN 11866, EN 10217-7 TC2, D4/T4 Utv. slipade

Ra värde max. 2,5 My inv.

Aseptic pipe, Ra max. 2,5 My inside

| Dim. mm | Dim. | EN 1.4404 |
|---------------|--------|------------------------|
| | | Varunr. Article no. |
| 12,70 x 1,650 | 1/2" | ▶ 28000 |
| 19,05 x 1,650 | 3/4" | ▶ 28001 |
| 25,40 x 1,650 | 1" | ● 28002 |
| 38,10 x 1,650 | 1 1/2" | ● 28003 |
| 50,80 x 1,650 | 2" | ● 28004 |
| 63,50 x 1,650 | 2 1/2" | ● 28005 |
| 76,10 x 1,650 | 3" | ▶ 28006 |



Aseptiskt rör

DIN 11866, EN 10217-7 TC2, D4/T4 Utv. slipade

Ra värde max. 0,8 My inv.

Aseptic pipe, Ra max. 0,8 My inside

| Dim. mm | Dim. | EN 1.4404 |
|----------------|--------|------------------------|
| | | Varunr. Article no. |
| 12,70 x 1,650 | 1/2" | ● 28010 |
| 19,05 x 1,650 | 3/4" | ● 28011 |
| 25,40 x 1,650 | 1" | ● 28012 |
| 38,10 x 1,650 | 1 1/2" | ● 28013 |
| 50,80 x 1,650 | 2" | ● 28014 |
| 63,50 x 1,650 | 2 1/2" | ● 28015 |
| 76,10 x 1,650 | 3" | ● 28016 |
| 101,60 x 2,110 | 4" | ● 28016 |

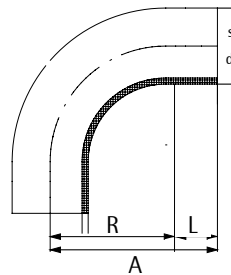


Böj 90°, aseptisk

Ra värde max. 0,8 My inv.

Elbow 90°, aseptic, Ra max. 0,8 My inside

| Dim. mm | d mm | s mm | A mm | R mm | L mm | EN 1.4404 |
|------------|---------|---------|---------|---------|---------|------------------------|
| | | | | | | Varunr. Article no. |
| 1/2" | 12,70 | 1,65 | 76,20 | 27,00 | 49,20 | ▶ 15679 |
| 3/4" | 19,05 | 1,65 | 76,20 | 26,00 | 50,20 | ● 15680 |
| 1" | 25,40 | 1,65 | 76,20 | 38,10 | 38,10 | ● 15681 |
| 1 1/2" | 38,10 | 1,65 | 114,30 | 57,20 | 57,10 | ● 15682 |
| 2" | 50,80 | 1,65 | 146,05 | 76,20 | 69,85 | ● 15683 |
| 2 1/2" | 63,50 | 1,65 | 146,05 | 95,30 | 50,75 | ● 15684 |
| 3" | 76,10 | 1,65 | 165,10 | 114,30 | 50,80 | ● 15685 |
| 4" | 101,60 | 2,11 | 215,90 | 152,50 | 63,40 | ▶ 15686 |

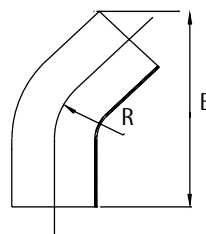


Böj 45°, aseptisk

Ra värde max. 0,8 My inv.

Elbow 45°, aseptic, Ra max. 0,8 My inside

| Dim. mm | d mm | s mm | A mm | R mm | EN 1.4404 |
|------------|---------|---------|---------|---------|------------------------|
| | | | | | Varunr. Article no. |
| 1/2" | 12,70 | 1,65 | 57,20 | 27,00 | ▶ 15687 |
| 3/4" | 19,05 | 1,65 | 57,20 | 26,00 | ▶ 15688 |
| 1" | 25,40 | 1,65 | 57,20 | 38,10 | ● 15689 |
| 1 1/2" | 38,10 | 1,65 | 76,20 | 57,20 | ● 15690 |
| 2" | 50,80 | 1,65 | 82,60 | 76,20 | ● 15691 |
| 2 1/2" | 63,50 | 1,65 | 92,10 | 95,30 | ● 15692 |
| 3" | 76,10 | 1,65 | 98,40 | 114,30 | ● 15693 |
| 4" | 101,60 | 2,11 | 127,00 | 152,50 | ▶ 15694 |

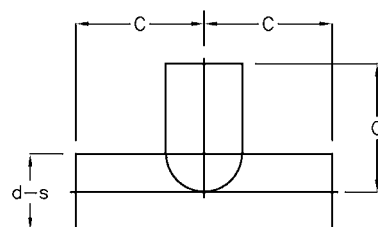


T-rör, aseptisk

Ra värde max. 0,8 My inv.

Tee, aseptic, Ra max. 0,8 My inside

| Dim. mm | d mm | s mm | c mm | EN 1.4404 |
|------------|---------|---------|---------|------------------------|
| | | | | Varunr. Article no. |
| 1/2" | 12,70 | 1,65 | 54,00 | ● 15695 |
| 3/4" | 19,05 | 1,65 | 54,00 | ● 15696 |
| 1" | 25,40 | 1,65 | 54,00 | ● 15697 |
| 1 1/2" | 38,10 | 1,65 | 60,30 | ● 15698 |
| 2" | 50,80 | 1,65 | 79,40 | ● 15699 |
| 2 1/2" | 63,50 | 1,65 | 85,70 | ● 15700 |
| 3" | 76,10 | 1,65 | 92,10 | ▶ 15701 |
| 4" | 101,60 | 2,11 | 117,50 | ▶ 15702 |

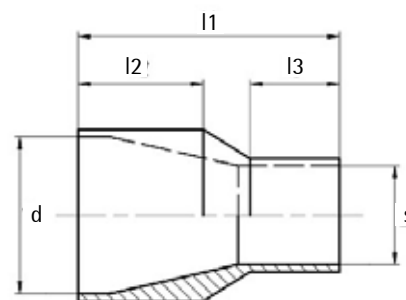


Koncentrisk kona, aseptisk

Ra värde max. 0,8 My inv.

Concentric reducer, Ra max. 0,8 My inside

| Dim. mm | d mm | s mm | l1 mm | l2 mm | l3 mm | EN 1.4404 |
|-----------------|---------------|---------|----------|----------|----------|------------------------|
| | | | | | | Varunr. Article no. |
| 3/4" x 1/2" | 19,05 - 12,07 | 1,65 | 101,6 | 25 | 25 | ▶ 15703 |
| 1" x 1/2" | 25,04 - 12,07 | 1,65 | 114,3 | 25 | 25 | ● 15704 |
| 1 1/2" x 3/4" | 38,10 - 19,05 | 1,65 | 127,0 | 30 | 25 | ● 15721 |
| 1 1/2" x 1" | 38,10 - 25,04 | 1,65 | 127,0 | 30 | 25 | ● 15705 |
| 2" x 1 1/2" | 50,80 - 38,10 | 1,65 | 139,7 | 30 | 30 | ● 15706 |
| 2 1/2" x 1 1/2" | 63,50 - 38,10 | 1,65 | 190,5 | 30 | 30 | ● 15707 |
| 2 1/2" x 2" | 63,50 - 50,80 | 1,65 | 152,4 | 30 | 30 | ● 15708 |
| 3" x 1 1/2" | 76,10 - 38,10 | 1,65 | 241,3 | 40 | 30 | ▶ 15711 |
| 3" x 2" | 76,10 - 50,80 | 1,65 | 203,2 | 40 | 30 | ● 15709 |
| 3" x 2 1/2" | 76,10 - 63,50 | 1,65 | 152,4 | 40 | 40 | ▶ 15710 |

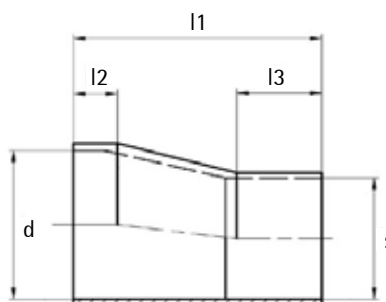


Excenrisk kona, aseptisk

Ra värde max. 0,8 My inv.

Eccentric reducer, aseptic, Ra max. 0,8 My inside

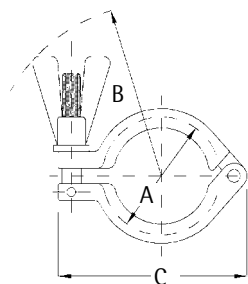
| Dim. mm | d mm | s mm | l1 mm | l2 mm | l3 mm | EN 1.4404 |
|-------------|---------------|---------|----------|----------|----------|------------------------|
| | | | | | | Varunr. Article no. |
| 1 1/2" x 1" | 38,10 - 25,04 | 1,65 | 127,0 | 30 | 25 | ● 15712 |
| 2" x 1 1/2" | 50,80 - 38,10 | 1,65 | 139,7 | 30 | 30 | ● 15713 |



Clampring med vingmutter, aseptisk

Wingnut clamp, aseptic

| Dim. mm | A mm | B mm | C mm | EN 1.4404 |
|-------------|---------|---------|---------|------------------------|
| | | | | Varunr. Article no. |
| 1/2" - 3/4" | 25 | 63 | 60 | ● 15650 |
| 1" - 1 1/2" | 50 | 78 | 85 | ● 15651 |
| 2" | 64 | 82 | 99 | ● 15652 |
| 2 1/2" | 77 | 89 | 112 | ● 15653 |
| 3" | 91 | 96 | 126 | ● 15654 |
| 4" | 119 | 110 | 154 | ▶ 15655 |

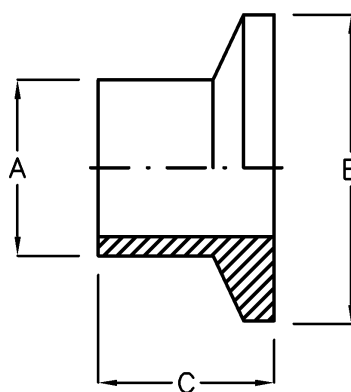


Clamphylsa, aseptisk

Ra värde max. 0,8 My inv.

Clamp ferrule, aseptic, Ra max. 0,8 My inside

| Dim. mm | A mm | B mm | C mm | EN 1.4404 |
|--------------|---------|---------|---------|------------------------|
| | | | | Varunr. Article no. |
| 12,70 x 1,65 | 1/2" | 25 | 28,6 | ● 15671 |
| 19,05 x 1,65 | 3/4" | 25 | 28,6 | ● 15672 |
| 25,40 x 1,65 | 1" | 50,5 | 28,6 | ● 15673 |
| 38,10 x 1,65 | 1 1/2" | 50,5 | 28,6 | ● 15674 |
| 50,80 x 1,65 | 2" | 64 | 28,6 | ● 15675 |
| 63,50 x 1,65 | 2 1/2" | 77,5 | 28,6 | ● 15676 |
| 76,10 x 1,65 | 3" | 91 | 28,6 | ● 15677 |
| 101,6 x 2,11 | 4" | 119 | 28,6 | ▶ 15678 |
| 219,0 x 2,00 | 5" | 155 | 28,0 | ▶ 32186 |



Packning EPDM/PFTE, aseptisk

Seal EPDM/PFTE, aseptic

| Dim. mm | Dy mm | Di mm | EPDM | PTFE |
|------------|----------|----------------|------------------------|------------------------|
| | | | Varunr. Article no. | Varunr. Article no. |
| 1/2" | 22,0 | 11,0 utan läpp | ● 15656 | ▶ 15663 |
| 3/4" | 22,0 | 16,0 utan läpp | ● 15657 | ▶ 15664 |
| 1" | 50,5 | 22,8 | ● 15658 | ▶ 15665 |
| 1 1/2" | 50,5 | 35,5 | ● 15659 | ▶ 15666 |
| 2" | 64,0 | 48,2 | ● 15660 | ▶ 15667 |
| 2 1/2" | 77,5 | 60,5 | ● 15661 | ▶ 15668 |
| 3" | 91,0 | 73,2 | ● 15662 | ▶ 15669 |
| 4" | 119,0 | 97,8 | ▶ 15720 | ▶ 15670 |



Blindbricka, aseptisk

Ra värde max. 0,8 My inv.

Blanks, aseptic, Ra max. 0,8 My inside

| Dim. mm | D mm | L mm | EN 1.4404 |
|-------------|---------|---------|------------------------|
| | | | Varunr. Article no. |
| 1/2" - 3/4" | 25,0 | 5,0 | ▶ 15714 |
| 1" - 1 1/2" | 50,5 | 6,5 | ▶ 15715 |
| 2" | 64,0 | 6,5 | ▶ 15716 |
| 2 1/2" | 77,5 | 6,5 | ▶ 15717 |
| 3" | 91,0 | 6,5 | ▶ 15718 |
| 4" | 119,0 | 8,0 | ▶ 15719 |

